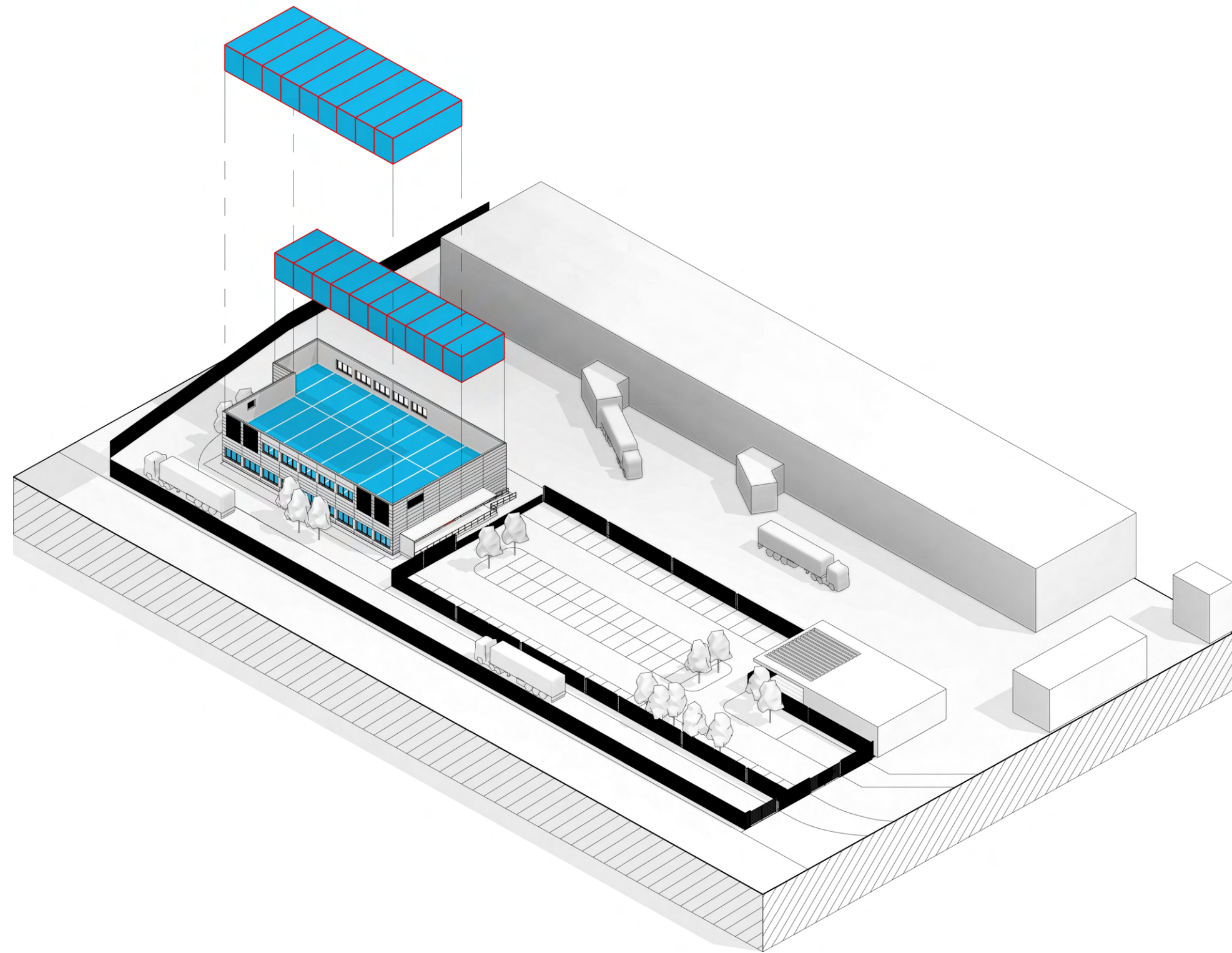


professional work
portfolio.



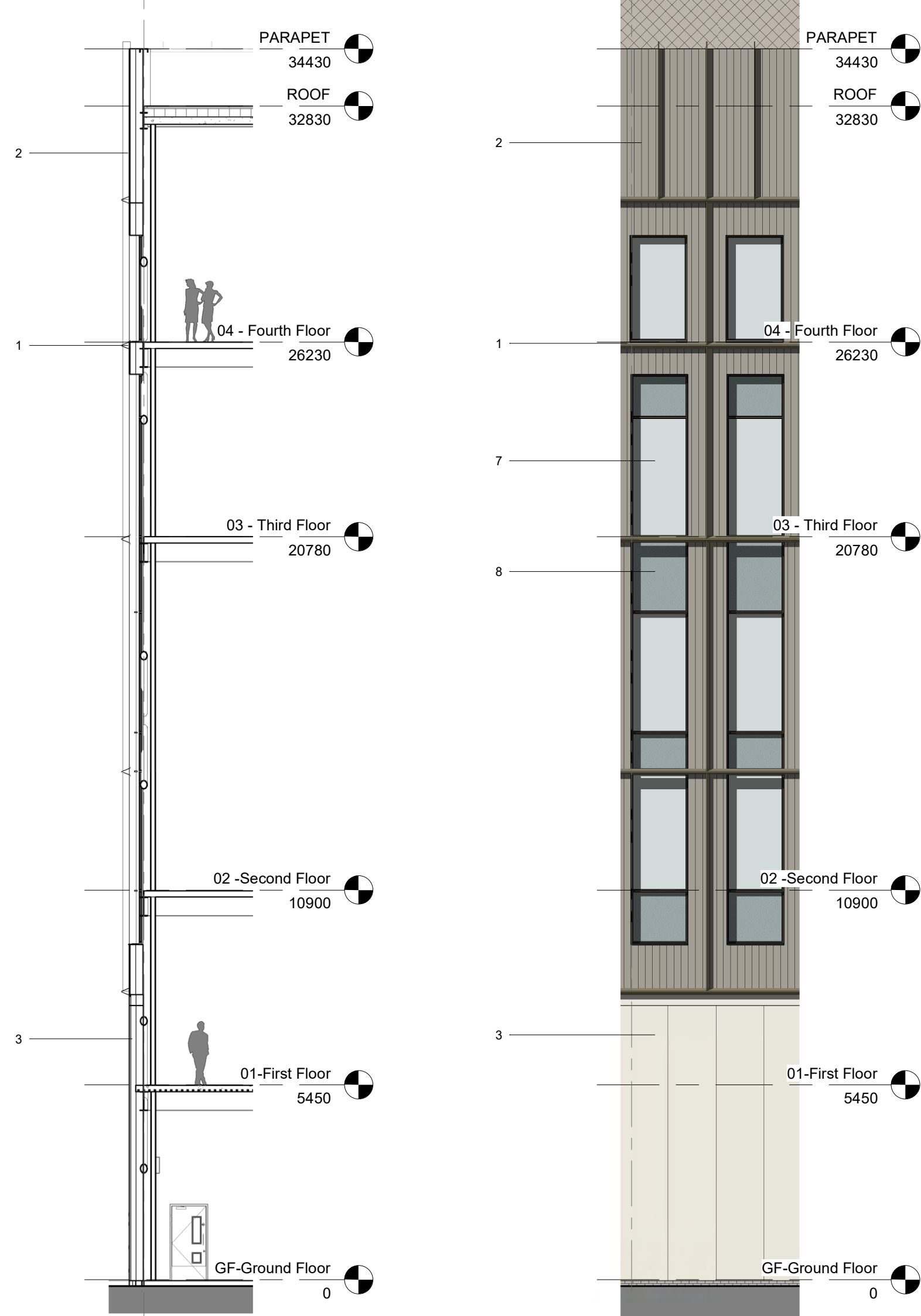
intro.

The following pages present selected professional projects completed during my employment as an **Architectural Designer at Merit**.

During my time at Merit, I initially worked within the **tenders team**, gaining experience in early-stage design, bid documentation, and project visualisation. I later transitioned to the **projects team**, where I contributed to detailed design development and delivery.

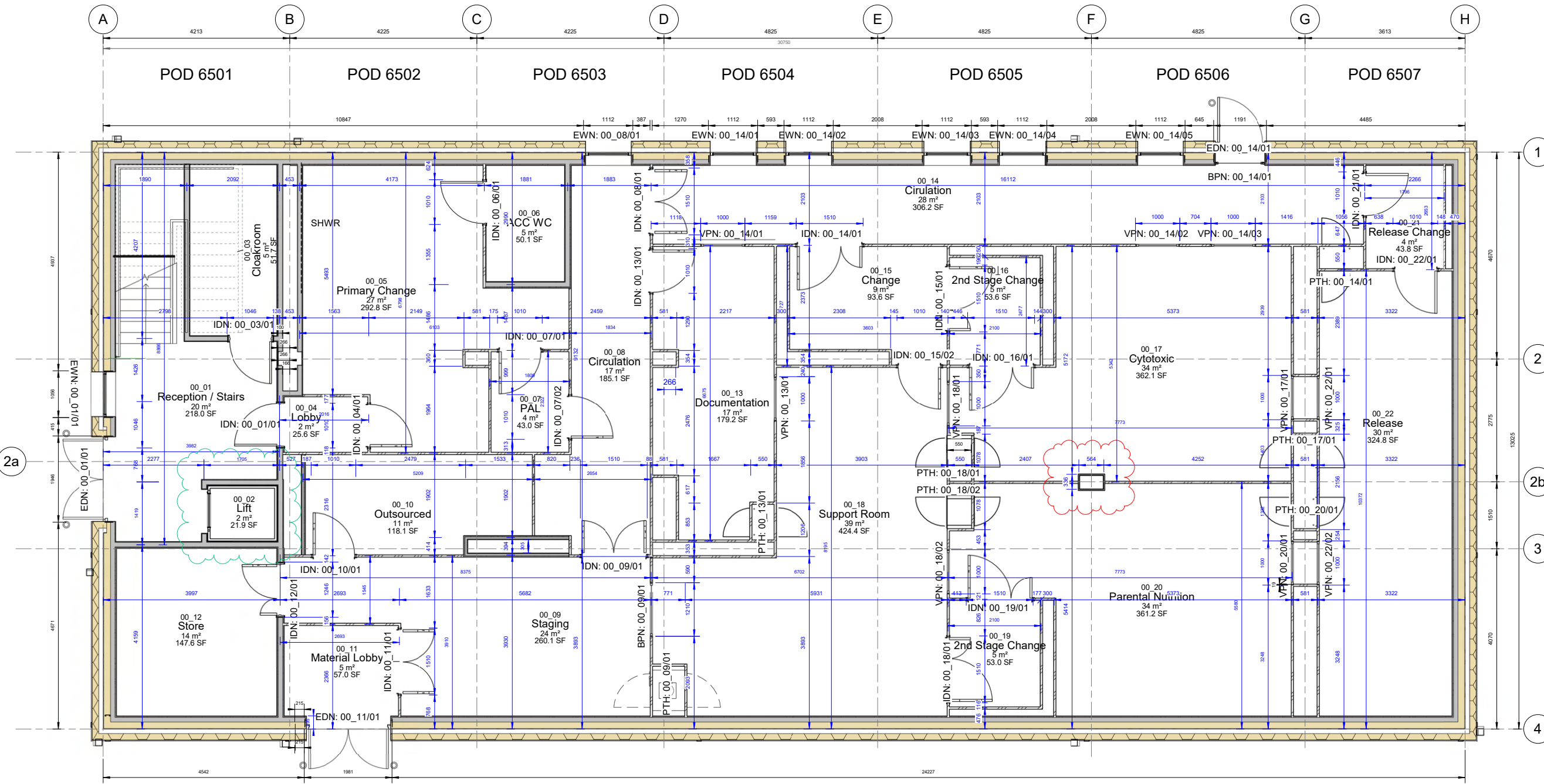
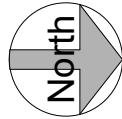
Due to confidentiality and non-disclosure agreements, certain project details and client names have been omitted. All work shown reflects my personal contributions within my professional capacity.

project stage
selected works.



DRAWING ANNOTATIONS
DRAWING REVISIONS
GENERAL NOTE & DIMENSIONS
IN ABEYANCE

Work In Progress.
Subject to Fire Strategy & Manufacturer Specification.



2a

1

2

2b

3

4

2 Ground Floor - GA Plan
1 : 50

Project type-
Healthcare- Aseptic Facility

SETTING OUT LEGEND	
	Dimensions in BLUE are from wall stud centrelines to grid lines or to wall stud centrelines.
	Dimensions in BLACK are structural measurements from SFS to SFS.
	Dimensions in RED highlight coordination issues or measurements in Abeyance.
XXX: XX_XX/0X references door, window and louvre numbers to be read in conjunction with the relevant schedules.	

DO NOT SCALE IF IN DOUBT ASK

NOTES:

ALL DIMENSIONS ARE IN MM UNLESS OTHERWISE STATED.

ANY ANOMALIES TO BE REPORTED TO DESIGN DEPARTMENT PRIOR TO FABRICATION.

ANY DEVIATIONS FROM DRAWING TO BE REPORTED TO DESIGN DEPARTMENT PRIOR TO INSTALLATION.

1.All copyright remains with Merit. Drawings are issued for this project only and must not be reused, copied, or adapted without written permission. Licence requests: licence@merit.co.uk.

2.Drawings must be read in conjunction with all relevant architectural, engineering, and specialist information to ensure full coordination.

3.Any discrepancies within these drawings or between them and other documents must be referred to Merit before work proceeds.

4.Do not scale from drawings. Use figured dimensions only. Dimensions marked "to be site checked" must be verified prior to construction.

5.Subcontractor surveys (e.g. for steelwork) override indicative dimensions and must ensure accurate fit and coordination.

6.The Principal Contractor is responsible for all temporary works and must appoint a competent Temporary Works Coordinator (TWC) in line with BS 5975.

7.Contractor-designed elements affecting Merit's scope must be submitted to the Engineer a minimum of 10 working days before fabrication. Merit's review does not transfer design responsibility.

8.Proprietary products shown are based on supplier data. Merit accepts no liability for their performance. Installation must follow manufacturer instructions.

9.All works must comply with the Construction (Design and Management) Regulations 2015. The Principal Contractor is responsible for site health, safety, and coordination.

10.Any significant residual design risks are highlighted in drawings or specifications and must be addressed in construction planning.

11. Only the latest revision of each drawing is to be used. Superseded versions must be removed from circulation.

P22	10.09.25	Updated as per Lift Manufacturer Specification	MP	AB
P21	04.09.25	Revised structural openings	AM	AB
P20	01.09.25	Revised as per acoustic strategy.	AB	MM
P19	07.08.25	External door tags added.	AB	MM
P18	06.08.25	Outsourced G-CON wall moved as per C-Sheet design.	AB	MM
P17	01.08.25	Stair setting out revised to suit structural design.	AB	MM
P16	01.08.25	Reconfiguration of Release Change as per client comment.	AB	MM
P15	28.07.25	External wall build up revised and checked against SFS and G-CON.	AB	MM
P14	25.07.25	Revised as per design development.	AB	MM
P13	27.06.25	Revised as per client comment.	AB	MM
P12	29.05.25	SFS design updated as per M&E & structural comment.	AB	MM
P11	13.05.25	Updated as per client comment.	AB	MM
P10	28.04.25	Store added to staging area as per fire strategy comment.	AB	MM
P09	14.04.25	Revised sheet number. Proposed access lock fire door to replace removable panel.	AB	MM
P08	20.03.25	Revised as per client meeting.	AB	MM
P07	17.03.25	SHWR to replace WC. Reconfiguration Material Lobby as per client comment. 2nd VP to Documentation. External windows updated as per GMP comment.	AB	MM
P06	13.03.25	Revised as per QA comment.	AB	MM
P05	11.03.25	WC moved from POD wall.	AB	MM
P04	10.03.25	SHWR & Door added to circulation.	AB	MM
P03	10.03.25	LLE revised as per M&E comment. Prechange/Isolators revised & windows added into release as per client's comments.	AB	MM
P02	03.03.25	PN & CYTO swapped. Docu PTH moved. ACC SHWR added as per client's requirement.	AB	MM
P01	04.06.25	PRELIMINARY	RSA	MM
REV	DATE	DESCRIPTION	BY	APP
S3		REVIEW & COMMENT		

Unit 8, Northumberland Business Park
Cramlington, Northumberland
NE23 7RY

Telephone: +44 (0)191 250 4330
Email: enquiries@merit.co.uk
Web: <http://www.merit.co.uk>

WE OWN THE COPYRIGHT IN ALL WORK CREATED BY US OR FOR US. MANY OF OUR PRODUCTS ARE ALSO PATENT PROTECTED. REPLICATION OR REPRODUCTION OF SUCH WORK UNDER ANY CIRCUMSTANCES REQUIRES A WRITTEN LICENSE FROM US SETTING OUT THE TERMS UNDER WHICH SUCH REPLICATION AND/OR REPRODUCTION IS PERMITTED. OUR HEAVY INVESTMENT IN INNOVATION AND PRODUCT DEVELOPMENT NECESSARILY REQUIRES US TO RECOGNISABLY PROTECT OUR INVESTMENT AND INTELLECTUAL PROPERTY RIGHTS AND BREACHES OF OUR COPYRIGHT WILL BE PURSUED TO THE FULL EXTENT OF OUR RIGHTS. LICENCE REQUESTS SHOULD BE ADDRESSED TO licence@merit.co.uk

Client:

Drawing Title:
Proposed Ground Setting Out Plan
General Arrangement

Project Name:

Size: A1
Scale: As indicated

Drawn By: AB
Drawn Date: 20.03.2025
Checked By: MM
Approved By: MM
Approved Date: 20.03.2025

Drawing No:
10752-MRT-ZZ-GF-DR-A-3001

Rev
P22

Drawing Standards:
Approved Document B

Industrial Normal Hazard Max Travel Distance
Single Direction: 22 (25m max)
Multi Direction: 29m (45m max)

Building occupancy: 30
No. escape routes: 3

L1 AFD required in accordance with BS 5839-1 as per Fire Engineer comment.

DO NOT SCALE IF IN DOUBT ASK

NOTES:

ALL DIMENSIONS ARE IN MM UNLESS OTHERWISE STATED.

ANY ANOMALIES TO BE REPORTED TO DESIGN DEPARTMENT PRIOR TO FABRICATION.

ANY DEVIATIONS FROM DRAWING TO BE REPORTED TO DESIGN DEPARTMENT PRIOR TO INSTALLATION.

1. The copyright in this drawing will remain vested in Merit. Merit will not be liable for any use third parties make of this drawing for any purpose other than that for which it was originally provided by Merit.

Merit own the Copyright to the Mechanical Electrical and Plumbing systems incorporated within this drawing. Replication or reproduction of such work under any circumstances requires a written license from Merit setting out the terms under which such replication and/ or reproduction is permitted. Licence requests should be addressed to licence@merit.co.uk

2. This drawing is to be read in conjunction with all other relevant Architects, Engineers and specialists drawings, details and specifications.

3. Conflicting information shown on the Merit drawings or discrepancies between the information given by Merit and that provided by others must be referred to Merit before work proceeds.

4. Dimensions must not be scaled from this drawing, unless for statutory approval purposes (such as by planning or building control / building warrant departments).

5. Dimensions marked 'dimension to be site checked' are subject to confirmation by site measurement before construction proceeds.

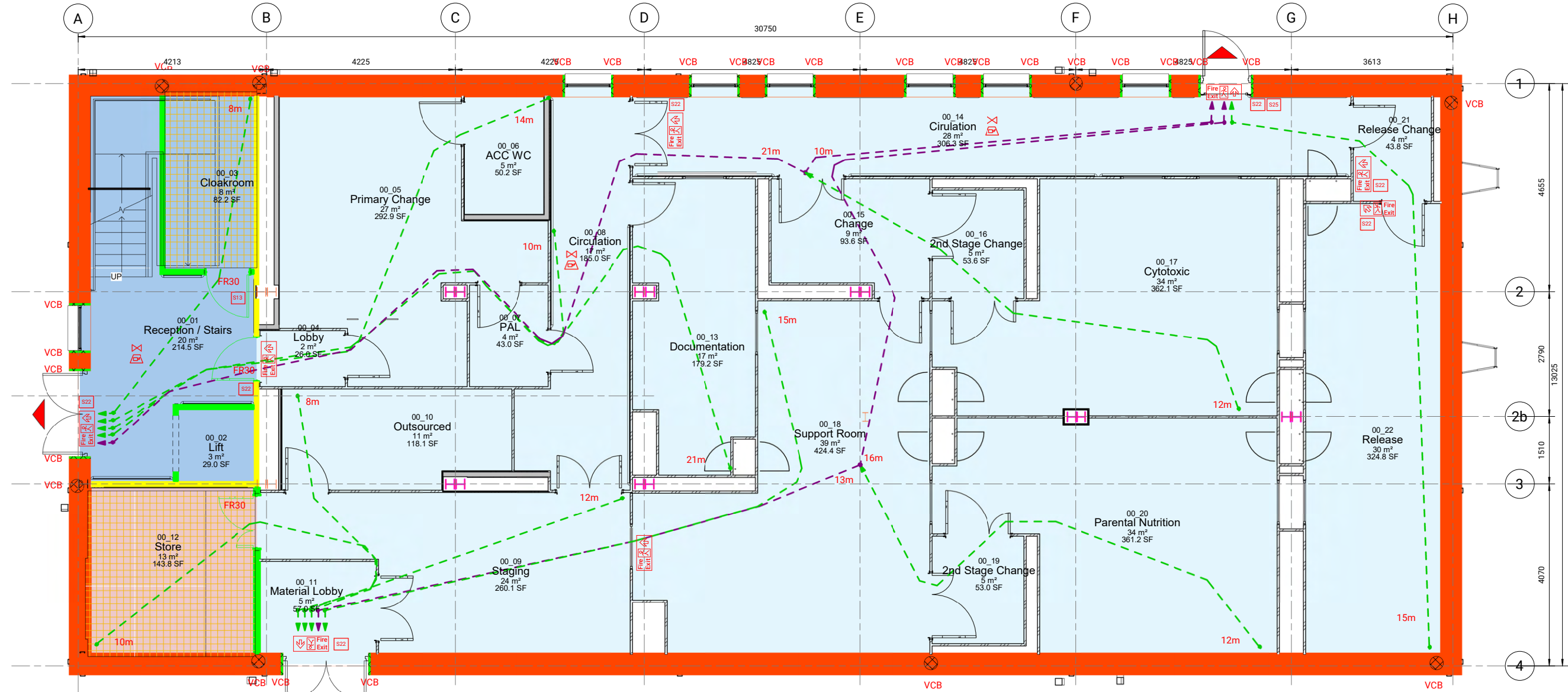
6. Subcontractor surveys, such as for the purposes of steelwork installation, take precedence over 'site dimensions' indicated on this drawing. All surveys should ensure an accurate fit of components.

7. Temporary works associated with the construction of the project shall be the responsibility of the Principal Contractor.

8. Where any temporary works or scaffolding are required the Principal Contractor shall appoint a competent and suitably experienced Temporary Works Coordinator (TWC). Refer to BS 5975 for guidance on temporary works and the role of a TWC.

9. Calculations and drawings of all Contractor designed structural items associated with Merit's design responsibilities shall be submitted to the Engineer for comment at least 10 days prior to manufacture. Any comments made by Merit do not absolve the Contractor of their design responsibilities.

10. The use of any proprietary products shown on this drawing or in any associated specifications is based solely on the data made available to Merit by the manufacturer and/or supplier, and Merit has made no detailed check of the proprietary aspects of that product which remain the sole liability of the manufacturer and/or product supplier. All proprietary products must be installed in accordance with the manufacturer's requirements.



1 Fire Strategy Site Plan
1 : 50

Fire Suppression

- Compartment 1
- Compartment 2
- Lift/ Stair Core

Project type-
Healthcare- Aseptic Facility
Fire strategy plan

DRAWING ANNOTATIONS

DRAWING REVISIONS

GENERAL NOTE & DIMENSIONS

IN ABEYANCE

Encasement/Painting Strategy Legend

All loadbearing structural frame, beam or column to achieve minimum FR90 (R).

I Load-bearing columns to be protected with intumescent coating to achieve the FR90 (R). Expansion gap to be minimum 50mm around column, as per manufacturer specification.

APPROVED DOCUMENT B FIRE LEGEND

ADB FIRE PROTECTION INFORMATION

The following is the relevant information this document must resolve as per Building Regulations Approved Document B.

- Escape routes - this should include exit capacity (i.e. the maximum allowable number of people for each storey and for the building.)
- Fire resisting construction and location of fire-separating elements (including cavity barriers in walk-in spaces).
- Fire doorsets, fire doorsets fitted with a self-closing device and other doors relevant to the fire safety strategy, such as doors equipped with relevant hardware.
- Locations of fire detector heads (e.g. heat and smoke detectors), manual call points, fire alarm control and indicating equipment, fire alarm sounders, fire safety signage, emergency lighting, fire extinguishers, dry or wet fire mains and other firefighting equipment, and hydrants outside the building.
- Any sprinkler systems, including isolating valves and control equipment.
- Any smoke control systems, or ventilation systems with a smoke control function, including mode of operation and control systems.
- Any high risk areas (e.g. heating machinery).
- Any power supplies or power generating installations.
- The location of secure information boxes.

Fire strategy drawings shall be read in conjunction with the Fire Strategy Report and are to be reviewed and approved by the appointed Fire Engineer and the relevant Building Control Body.

ESCAPE ROUTES

- Final or Storey Exit
- Emergency Escape Route Single Direction
- Emergency Escape Route Multi Direction

FIRE RESISTING CONSTRUCTION

- Indicates 30 min Fire Resisting Construction
- Indicates 60 min Fire Resisting Construction
- Indicates 90 min Fire Resisting Construction
- Indicates 120 min Fire Resisting Construction
- Cavity Barrier to Provide 30 min Fire Resistance
- CB Indicates 30 min Fire Resisting Construction
- CB Indicates 60 min Fire Resisting Construction
- CB Indicates 90 min Fire Resisting Construction
- CB Indicates 120 min Fire Resisting Construction

FIRE DOORSETS

Intumescent fire/smoke seals and self-closing devices must comply with EN 13501 for fire classification, ensuring integrity (E), insulation (I), and smoke control (S) where required. To be indicated on door schedules.

- VP Vision panels to be provided to certain doors as indicated on plan.

- FD-SK Indicates Fire Resisting Door with self-closing device.
- FD-LK Indicates Fire Resisting Door with no self closing device and "keep locked shut" notice.
- Fire Door FD30
- Fire Door FD60
- Fire Door FD90
- Fire Door FD120

Unless otherwise stated, all specified fire ratings are assumed to refer to both integrity and insulation performance.

FIRE FIGHTING EQUIPMENT

All fire fighting equipment to be provided and installed by client's representatives. All subject to their review in conjunction with the appointed Fire Officer.

- Portable fire extinguisher - Water type
- Portable fire extinguisher - Foam type
- Portable fire extinguisher - Carbon Dioxide type
- Portable fire extinguisher - Multi Purpose Dry

- Fire blanket
- Sand bucket
- Fire safety equipment to be adequately and easily accessible. Extinguishers must be positioned in prominent locations for clear visibility and quick access. Compliance with BS 5306-8:2023 is required for the correct placement of fire extinguishers.
- FIRE SAFETY SIGNAGE
- Fire safety signs to comply with BS 5499 Graphical symbols and signs. Location of luminaires to be finalised by M&E drawing. Emergency exit signage to be either internally illuminated or illuminated by adjacent emergency fitting.

- Locations for fire alarm call points.
- Area to be lit by emergency lighting (not exact luminaire point).
- Area to have Fire alarm sounders. Final locations of alarm sounders to be finalised by specialist sub-contractor.
- Area to have visible warning beacons. Final locations to be finalised by specialist sub-contractor.
- "Fire Door - Keep Shut" signs (5mm min' high lettering)
- "Fire Door - Keep Locked Shut" signs (5mm min' high lettering)
- "Automatic Fire Door - Keep Clear" signs (5mm min' high lettering)

- B17 Door To Be Secured Open.(Released on fire alarm)
- S20 "Fire Escape - Keep Clear" signs (5mm min' high lettering)
- S22 "Fire Exit" sign and running man symbol
- S25 "Push bar to Open" sign - Panic Bar to Fire Exit doors.
- Fire Alarm Control Panel location. (Any type)

S22 SIGNS viewed Head-On - as illustrated on plan

All signage placement subject to review in on-site visual inspection by building control officer and fire officer prior to hand-over and therefore may be subject to change.

- Straight on/straight on & up from here
- Up & right from here
- Right from here
- Down & right from here
- Down from here
- Down & left from here
- Left from here

- Up & left from here
- Up & left from here
- x2 Double sided exit signs
- Fire action procedure notice which deals with discovery of fire, hearing alarm, evacuation and roll call

Security and access control requirements to be confirmed by the client. Locations of fire safety signage and manual fire alarm call points are subject to client review and formal approval.

HIGH RISK AREAS

- Fire Hazardous Rooms High Risk
- Fire Hazardous Rooms Low Risk

POWER SUPPLIES & F. SECURE INFORMATION BOXES
Location of sprinklers to be finalised by M&E drawing.

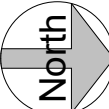
- SPRINKLER SYSTEMS
Location of sprinklers to be finalised by M&E drawing.
- Sprinkler Head Up
- Sprinkler Head Down

SMOKE CONTROL SYSTEMS

Location of sprinklers to be finalised by M&E drawing.

- SD Smoke Detector

Sprinkler systems are not required for this project in accordance with Fire Engineer comment.



P08	07.08.25	Revised as per fire engineer comments	AM	AB
P07	22.07.25	Revised as per Centurion comment.	AB	MM
P06	18.07.25	Revised as per design development.	AB	MM
P05	21.05.25	Revised as per Fire Engineer comment.	AB	MM
P04	14.05.25	Revised as per client comment.	AB	MM
P03	29.04.25	Revised as per client comment.	AB	MM
P02	17.04.25	Revised sheet number. Updated as per fire engineer comment.	AB	MM
P01	13.03.25	PRELIMINARY	AB	MM
REV	DATE	DESCRIPTION	BY	APP

S0 PRELIMINARY

MERIT

Unit 8, Northumberland Business Park
Cramlington, Northumberland
NE23 7RY

Telephone: +44 (0)191 250 4330
Email: enquiries@merit.co.uk
Web: http://www.merit.co.uk

© WE OWN THE COPYRIGHT IN ALL WORK CREATED BY US OR FOR US. MANY OF OUR PRODUCTS ARE ALSO PATENT PROTECTED. REPLICATION OR REPRODUCTION OF SUCH WORK UNDER ANY CIRCUMSTANCES REQUIRES A WRITTEN LICENSE FROM US SETTING OUT THE TERMS UNDER WHICH SUCH REPLICATION AND/OR REPRODUCTION IS PERMITTED. OUR HEAVY INVESTMENT IN INNOVATION AND PRODUCT DEVELOPMENT NECESSARILY REQUIRES US TO RIGOROUSLY PROTECT OUR INVESTMENT AND INTELLECTUAL PROPERTY RIGHTS AND BREACHES OF OUR COPYRIGHT WILL BE PURSUED TO THE FULL EXTENT OF OUR RIGHTS. LICENSE REQUESTS SHOULD BE ADDRESSED TO licence@merit.co.uk

Client:

Drawing Title:
Fire Strategy - Ground Floor

Project Name:		Size:	A1	Scale:	As indicated
Drawn By:	AB	Drawn Date:	13.03.2025	Checked By:	MM
Approved By:	MM	Approved Date:	13.03.2025	Rev:	
Drawing No:	10752-MTZ-ZT-GF-DR-A-3074				P08

DRAWING ANNOTATIONS
DRAWING REVISIONS
GENERAL NOTE & DIMENSIONS
IN ABEYANCE

Single leaf doors in labs subject to removal following fire engineer review

Partitions

- Rw 59 dB
- Rw 52 dB
- Rw 47 dB
- Rw 42 dB
- Rw 37 dB

Doors

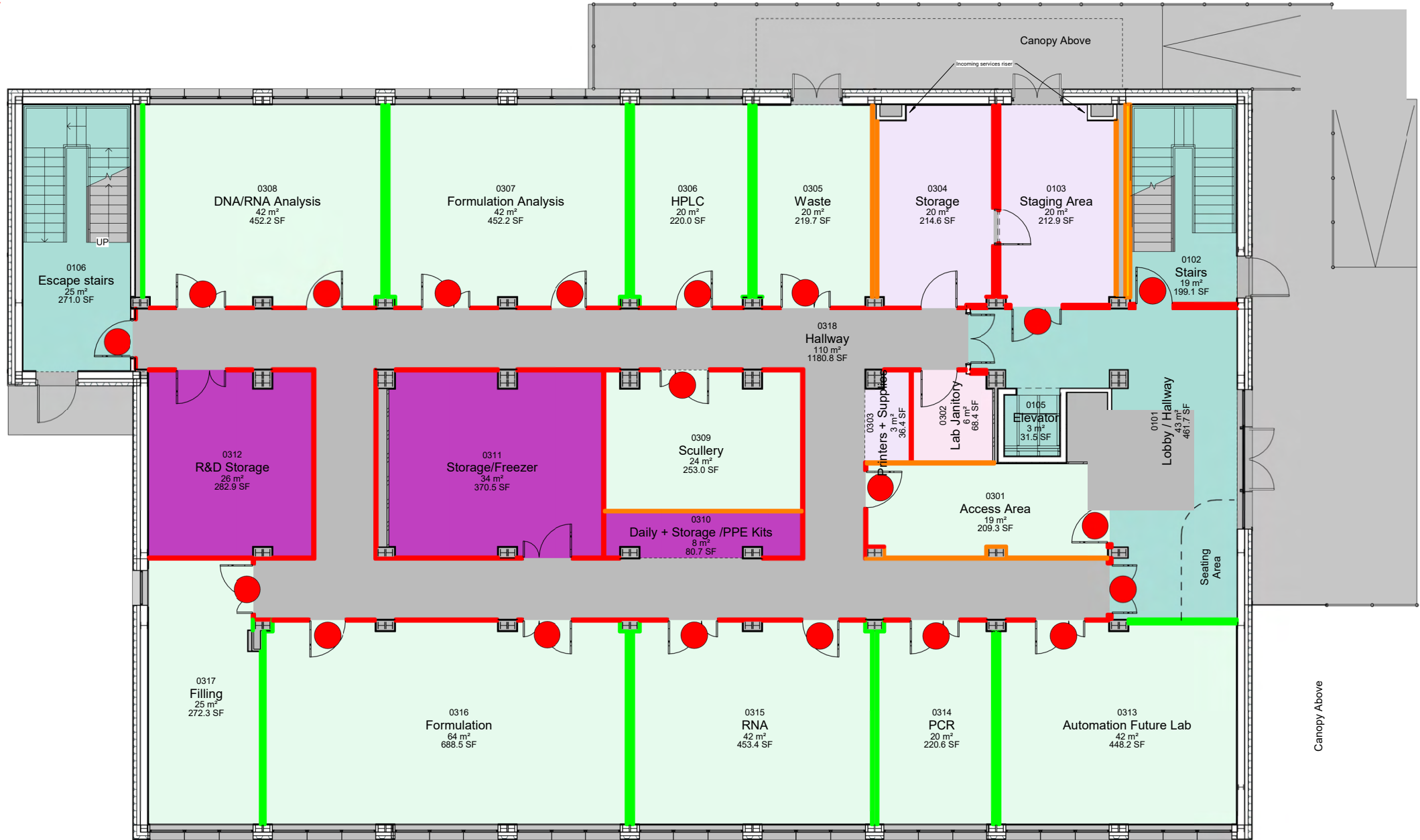
- Rw 35 dB
- Rw 30 dB

Glazed Screens

- Rw 45 dB
- Rw 38 dB

Background Noise Level

- CIRCULATION
- LAB AND PRODUCTION
- LIVING / SERVICES
- OTHER
- STORAGE



1 Ground Floor - Acoustic Plan
1 : 75

Acoustic Legend

Ceilings: Refer to the Reflected Ceiling Plan drawings for all ceiling ratings.

Rooms: The dB values listed for rooms represent their estimated noise tolerance (measured as LAeq over 30 minutes). The difference between the expected noise levels from adjacent spaces and the sound insulation performance of the separating construction must be less than the specified tolerance for each room.

Walls: The dB ratings shown for walls indicate their anticipated sound reduction performance. These ratings assume proper detailing at junctions and around any penetrations to maintain acoustic integrity.

Doors/Windows: The dB ratings for doors and windows specify the minimum required level of sound insulation for these components.

All stated values are intended as a design baseline and must be reviewed and confirmed with the Client, MEP consultants, and the Acoustic Consultant during detailed coordination.

All acoustic ratings shown are indicative and subject to verification.

Project type-
Biotech- R&D Labs
Acoustics Strategy Plan

DO NOT SCALE IF IN DOUBT ASK

NOTES:

ALL DIMENSIONS ARE IN MM UNLESS OTHERWISE STATED.

ANY ANOMALIES TO BE REPORTED TO DESIGN DEPARTMENT PRIOR TO FABRICATION.

ANY DEVIATIONS FROM DRAWING TO BE REPORTED TO DESIGN DEPARTMENT PRIOR TO INSTALLATION.

1.All copyright remains with Merit. Drawings are issued for this project only and must not be reused, copied, or adapted without written permission. Licence requests: licence@merit.co.uk.

2.Drawings must be read in conjunction with all relevant architectural, engineering, and specialist information to ensure full coordination.

3.Any discrepancies within these drawings or between them and other documents must be referred to Merit before work proceeds.

4.Do not scale from drawings. Use figured dimensions only. Dimensions marked "to be site checked" must be verified prior to construction.

5.Subcontractor surveys (e.g. for steelwork) override indicative dimensions and must ensure accurate fit and coordination.

6.The Principal Contractor is responsible for all temporary works and must appoint a competent Temporary Works Coordinator (TWC) in line with BS 5975.

7.Contractor-designed elements affecting Merit's scope must be submitted to the Engineer a minimum of 10 working days before fabrication. Merit's review does not transfer design responsibility.

8.Proprietary products shown are based on supplier data. Merit accepts no liability for their performance. Installation must follow manufacturer instructions.

9.All works must comply with the Construction (Design and Management) Regulations 2015. The Principal Contractor is responsible for site health, safety, and coordination.

10.Any significant residual design risks are highlighted in drawings or specifications and must be addressed in construction planning.

11. Only the latest revision of each drawing is to be used. Superseded versions must be removed from circulation.

Acoustic design is subject to building control sign off.

C01	10.07.25	FINAL DESIGN SUBMISSION	AB	MM
P04	08.07.25	For Final Review	AB	MM
P09	23.05.25	Updated Layout	AB	MM
P02	23.05.25	Updated Acoustic levels	AB	MM
P01	08.05.25	PRELIMINARY	AB	MM
REV	DATE	DESCRIPTION	BY	APP

Status: A4 TECHNICAL DESIGN



Unit 8, Northumberland Business Park
Cramlington, Northumberland
NE23 7RY

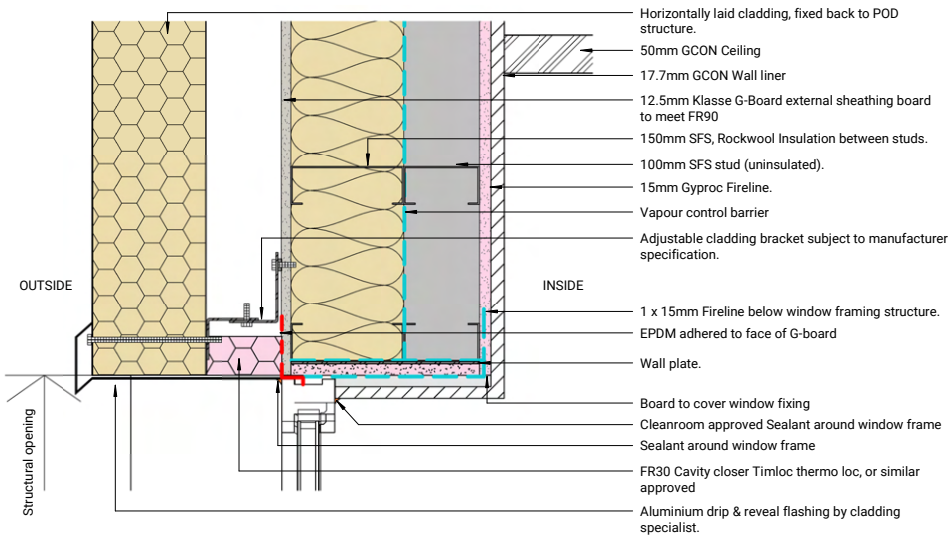
Telephone: +44 (0)191 250 4330
Email: enquiries@merit.co.uk
Web: <http://www.merit.co.uk>

© WE OWN THE COPYRIGHT IN ALL WORK CREATED BY US OR FOR US. MANY OF OUR PRODUCTS ARE ALSO PATENT PROTECTED. REPLICATION OR REPRODUCTION OF SUCH WORK UNDER ANY CIRCUMSTANCES REQUIRES A WRITTEN LICENSE FROM US SETTING OUT THE TERMS UNDER WHICH SUCH REPLICATION AND/OR REPRODUCTION IS PERMITTED. OUR HEAVY INVESTMENT IN INNOVATION AND PRODUCT DEVELOPMENT NECESSARILY REQUIRES US TO RIGOROUSLY PROTECT OUR INVESTMENT AND INTELLECTUAL PROPERTY RIGHTS AND BREACHES OF OUR COPYRIGHT WILL BE PURSUED TO THE FULL EXTENT OF OUR RIGHTS. LICENCE REQUESTS SHOULD BE ADDRESSED TO licence@merit.co.uk

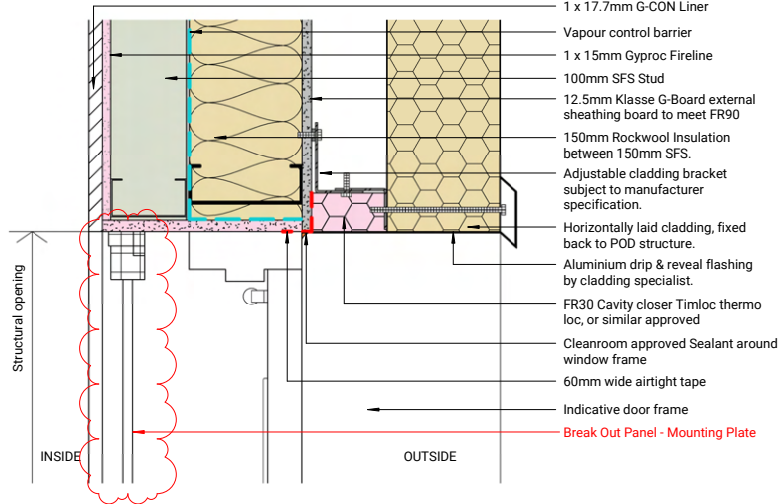
Client:

Drawing Title:
Ground Floor Acoustic Plan
Proposed Layout
General Arrangement

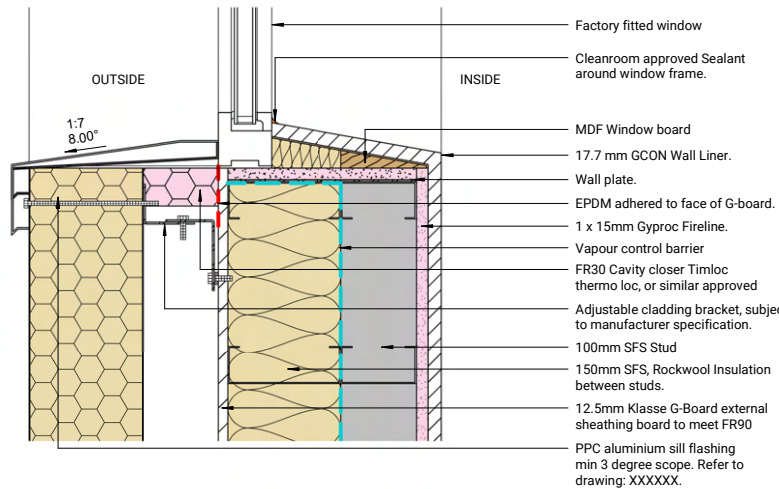
Project Name:	Size: A1	Scale: As indicated
Drawn By: AB	Drawn Date: 08/05/25	Checked By: MM
Approved By: MM	Approved Date: 08/05/25	Rev: C01
Drawing No: 10729-MRT-ZZ-GF-DR-A-3081		



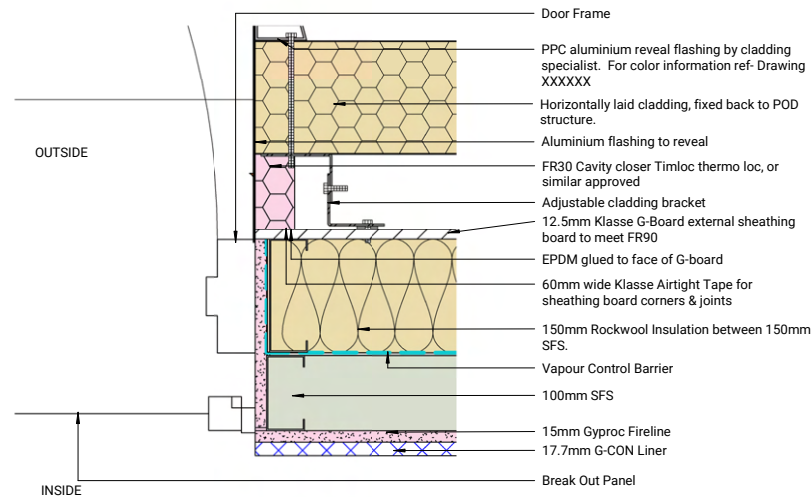
1 Envelope- Ground Floor- Window Head- Section detail
1 : 5



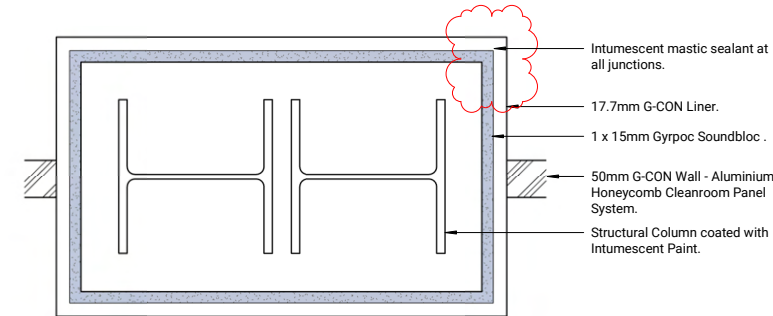
2 G-CON Break-Out Panel/ Door Section Detail Head
1 : 5



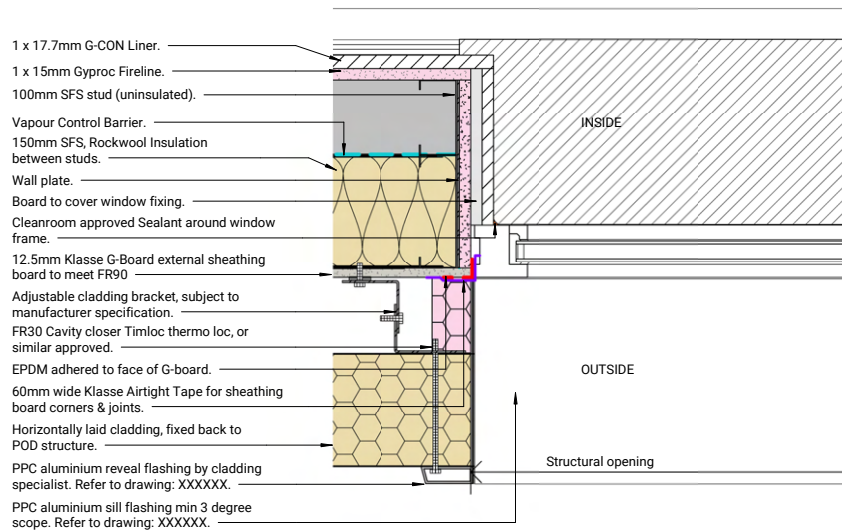
8 Envelope- Cleanroom GF - Window Sill- Section detail MP
1 : 5



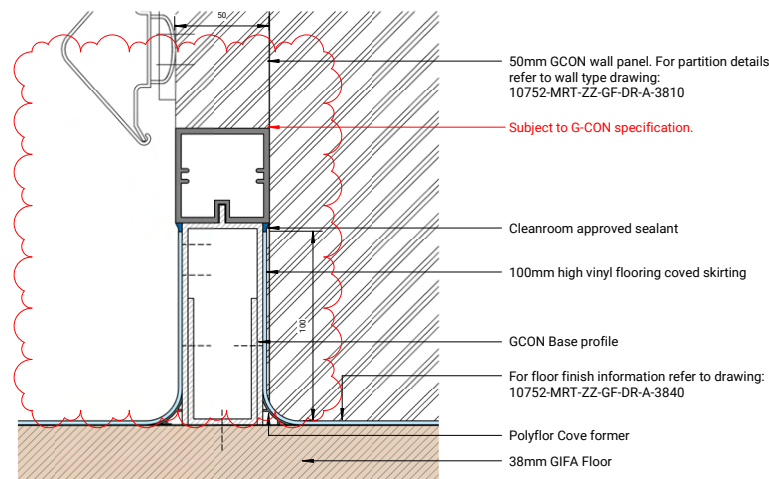
9 G-CON Break-Out Panel/ Door Plan Detail
1 : 5



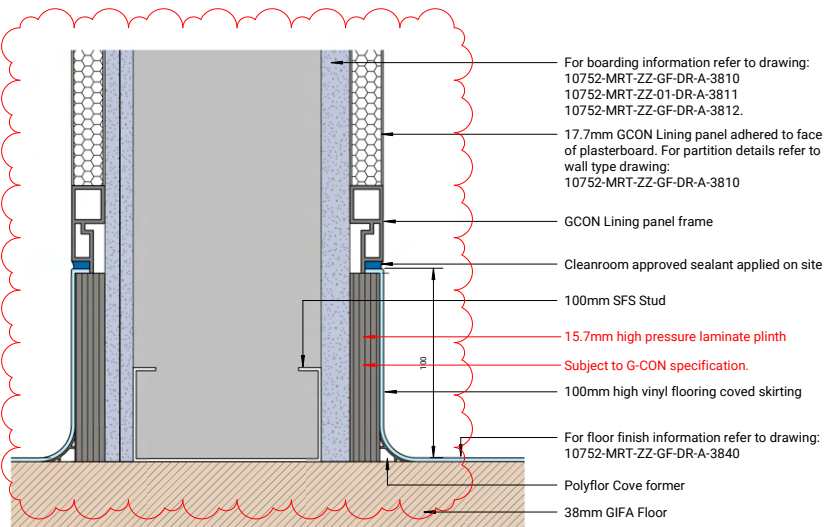
7 G-CON Boxing Out Detail
1 : 5



6 Envelope Detail - GF Cleanroom Window Jamb - Plan MP
1 : 5



3 Skirting Detail- Vinyl Coving at Cleanroom panel
1 : 2



4 Skirting detail- Vinyl Coving at Cleanroom liner
1 : 2

DRAWING ANNOTATIONS
DRAWING REVISIONS
GENERAL NOTE & DIMENSIONS
IN ABEYANCE

Project type- Healthcare- Aseptic Facility Typical Cleanroom details

- DO NOT SCALE IF IN DOUBT ASK**
- NOTES:**
- ALL DIMENSIONS ARE IN MM UNLESS OTHERWISE STATED.
- ANY ANOMALIES TO BE REPORTED TO DESIGN DEPARTMENT PRIOR TO FABRICATION.
- ANY DEVIATIONS FROM DRAWING TO BE REPORTED TO DESIGN DEPARTMENT PRIOR TO INSTALLATION.
- 1.All copyright remains with Merit. Drawings are issued for this project only and must not be reused, copied, or adapted without written permission. Licence requests: licence@merit.co.uk.
- 2.Drawings must be read in conjunction with all relevant architectural, engineering, and specialist information to ensure full coordination.
- 3.Any discrepancies within these drawings or between them and other documents must be referred to Merit before work proceeds.
- 4.Do not scale from drawings. Use figured dimensions only. Dimensions marked "to be site checked" must be verified prior to construction.
- 5.Subcontractor surveys (e.g. for steelwork) override indicative dimensions and must ensure accurate fit and coordination.
- 6.The Principal Contractor is responsible for all temporary works and must appoint a competent Temporary Works Coordinator (TWC) in line with BS 5975.
- 7.Contractor-designed elements affecting Merit's scope must be submitted to the Engineer a minimum of 10 working days before fabrication. Merit's review does not transfer design responsibility.
- 8.Proprietary products shown are based on supplier data. Merit accepts no liability for their performance. Installation must follow manufacturer instructions.
- 9.All works must comply with the Construction (Design and Management) Regulations 2015. The Principal Contractor is responsible for site health, safety, and coordination.
- 10.Any significant residual design risks are highlighted in drawings or specifications and must be addressed in construction planning.
11. Only the latest revision of each drawing is to be used. Superseded versions must be removed from circulation.

P02	10.09.25	PRELIMINARY	AB	MM
P01	08.08.25	PRELIMINARY	AB	MM
REV	DATE	DESCRIPTION	BY	APP
S0		PRELIMINARY		



Unit 8, Northumberland Business Park
Cramlington, Northumberland
NE23 7RY

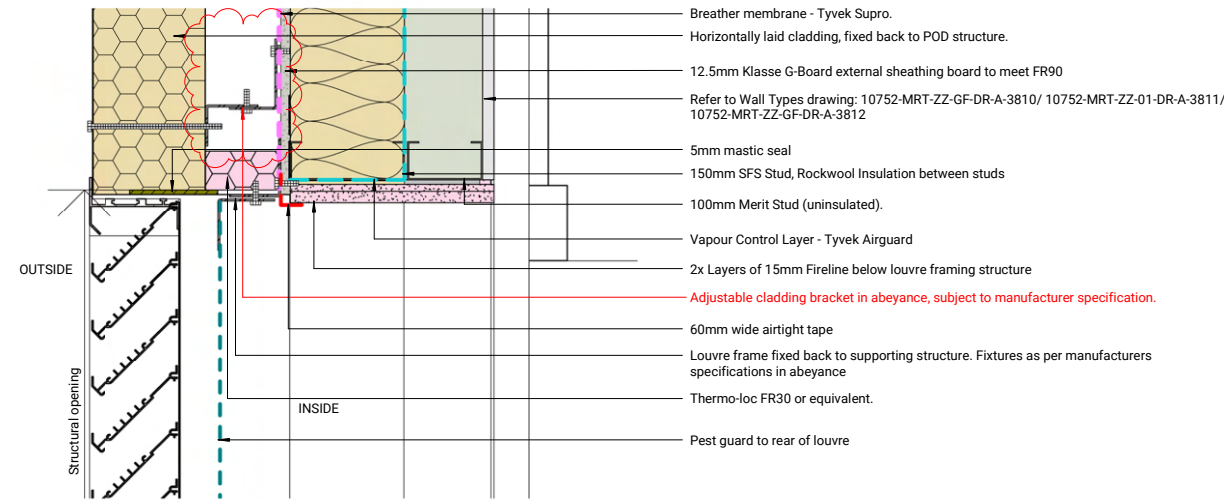
Telephone: +44 (0)191 250 4330
Email: enquiries@merit.co.uk
Web: <http://www.merit.co.uk>

© WE OWN THE COPYRIGHT IN ALL WORK CREATED BY US OR FOR US. MANY OF OUR PRODUCTS ARE ALSO PATENT PROTECTED. REPLICATION OR REPRODUCTION OF SUCH WORK UNDER ANY CIRCUMSTANCES REQUIRES A WRITTEN LICENSE FROM US SETTING OUT THE TERMS UNDER WHICH SUCH REPLICATION AND/OR REPRODUCTION IS PERMITTED. OUR HEAVY INVESTMENT IN INNOVATION AND PRODUCT DEVELOPMENT NECESSARILY REQUIRES US TO RIGOROUSLY PROTECT OUR INVESTMENT AND INTELLECTUAL PROPERTY RIGHTS AND BREACHES OF OUR COPYRIGHT WILL BE PURSUED TO THE FULL EXTENT OF OUR RIGHTS. LICENCE REQUESTS SHOULD BE ADDRESSED TO licence@merit.co.uk

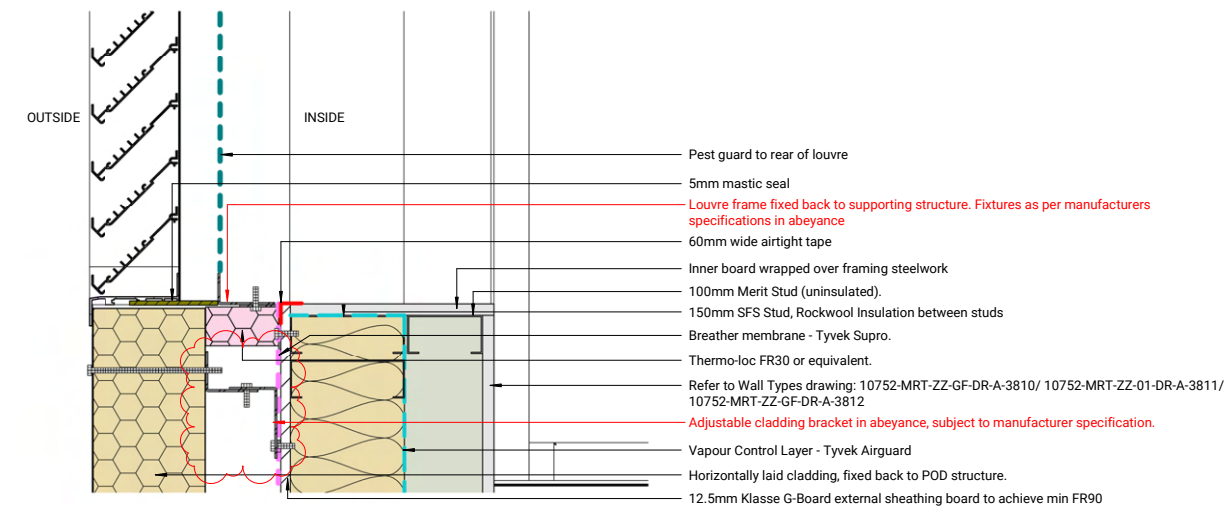
Client:

Drawing Title:
Typical Cleanroom Details 1

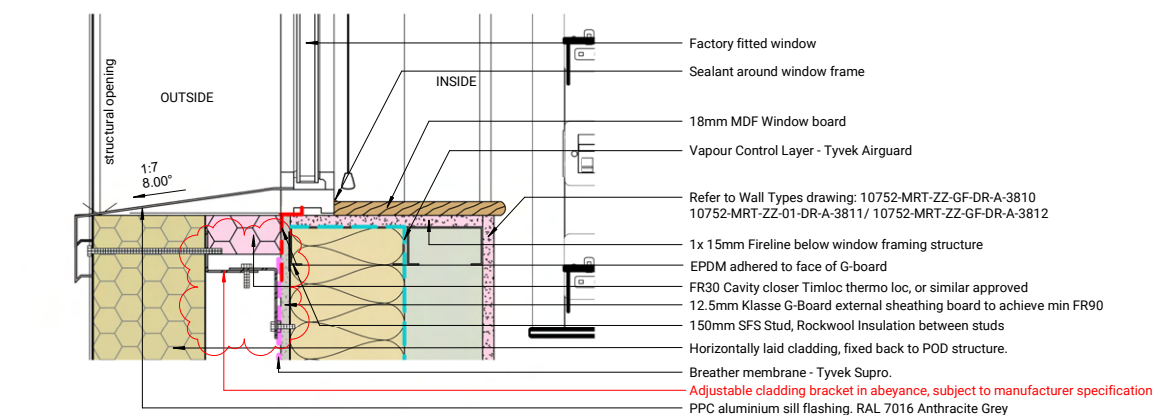
Project Name:		Size:	A1	Scale:	As indicated
Drawn By:	AB	Draw Date:	08.08.25	Checked By:	MM
Approved By:	TW	Approved Date:	08.08.25	Rev:	
Drawing No:	10752-MRT-ZZ-XX-DR-A-3710				P02



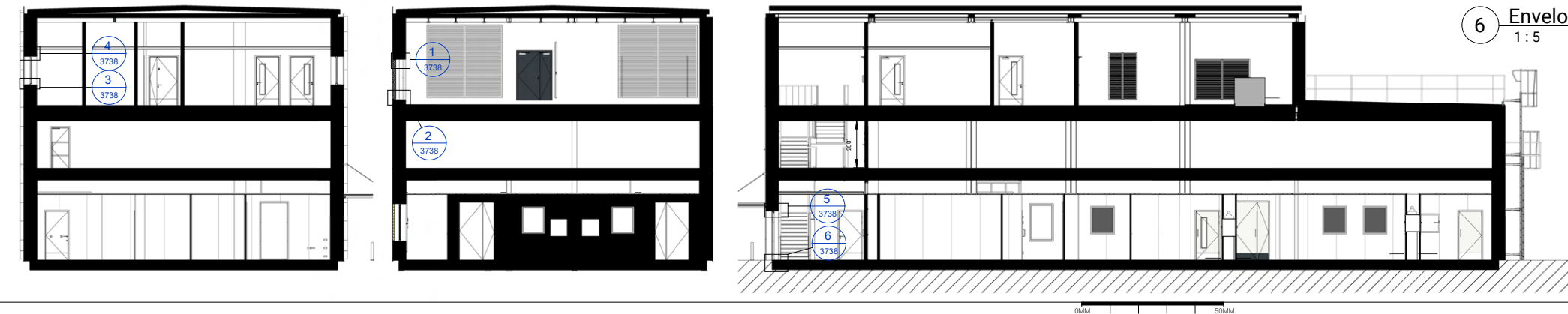
1 Envelope- Louvre head- Section detail
1 : 5



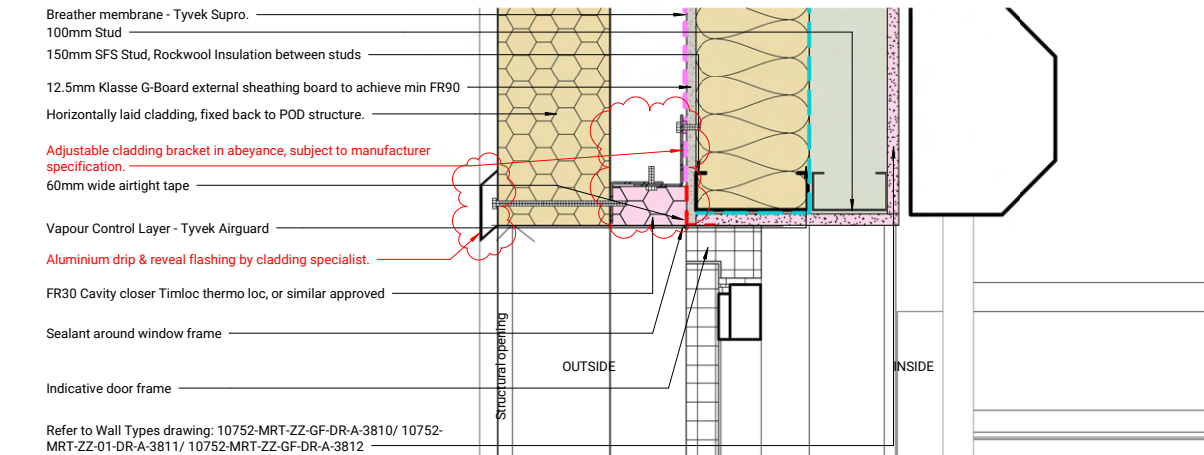
2 Envelope- Louvre base- Section detail
1 : 5



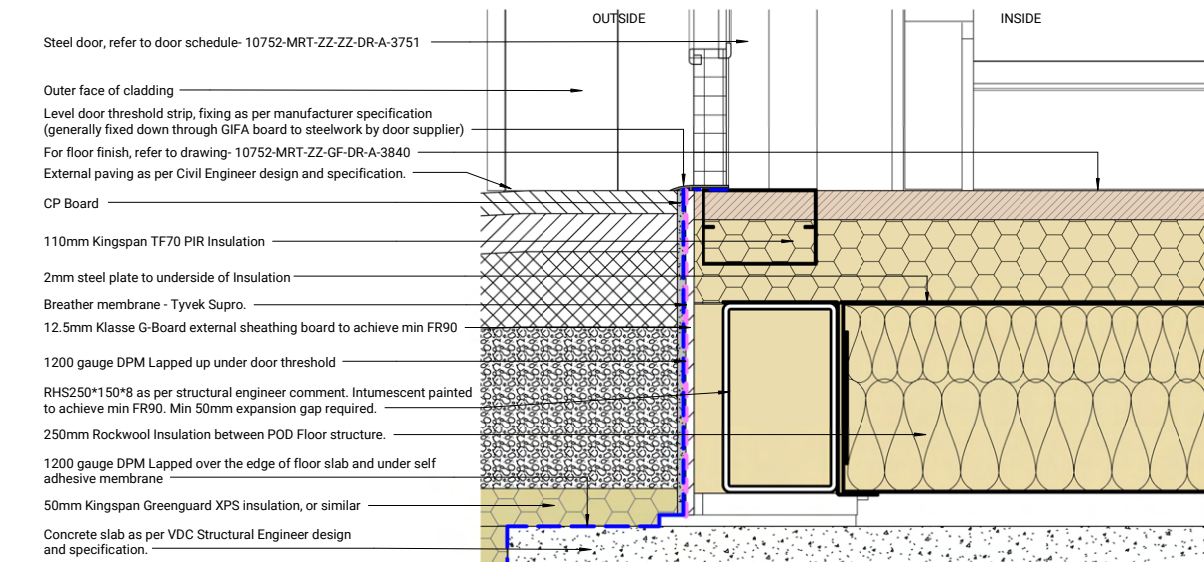
3 Envelope- FF Level- Window Sill Section detail
1 : 5



4 Envelope- FF Level- Window Head- Section detail
1 : 5



5 Envelope- Door Head- Section detail
1 : 5



6 Envelope- Door Threshold- Section detail
1 : 5

Project type-
Healthcare- Aseptic Facility
Envelope details

DO NOT SCALE IF IN DOUBT ASK

NOTES:

ALL DIMENSIONS ARE IN MM UNLESS OTHERWISE STATED.

ANY ANOMALIES TO BE REPORTED TO DESIGN DEPARTMENT PRIOR TO FABRICATION.

ANY DEVIATIONS FROM DRAWING TO BE REPORTED TO DESIGN DEPARTMENT PRIOR TO INSTALLATION.

1.All copyright remains with Merit. Drawings are issued for this project only and must not be reused, copied, or adapted without written permission. Licence requests: licence@merit.co.uk.

2.Drawings must be read in conjunction with all relevant architectural, engineering, and specialist information to ensure full coordination.

3.Any discrepancies within these drawings or between them and other documents must be referred to Merit before work proceeds.

4.Do not scale from drawings. Use figured dimensions only. Dimensions marked "to be site checked" must be verified prior to construction.

5.Subcontractor surveys (e.g. for steelwork) override indicative dimensions and must ensure accurate fit and coordination.

6.The Principal Contractor is responsible for all temporary works and must appoint a competent Temporary Works Coordinator (TWC) in line with BS 5975.

7.Contractor-designed elements affecting Merit's scope must be submitted to the Engineer a minimum of 10 working days before fabrication. Merit's review does not transfer design responsibility.

8.Proprietary products shown are based on supplier data. Merit accepts no liability for their performance. Installation must follow manufacturer instructions.

9.All works must comply with the Construction (Design and Management) Regulations 2015. The Principal Contractor is responsible for site health, safety, and coordination.

10.Any significant residual design risks are highlighted in drawings or specifications and must be addressed in construction planning.

11. Only the latest revision of each drawing is to be used. Superseded versions must be removed from circulation.

Membrane Detail Key:

	Vapour Control Layer - Tyvek Airguard Control.
	60mm wide Klasse Airtight Tape for sheathing board corners & joints, 150mm wide VisqueenPro single-sided edge tape for pod joints, or EPDM for factory-installed window & door openings.
	Damp Proof Membrane min. 1200 gauge.
	Breather membrane Tyvek Supro.

DRAWING ANNOTATIONS

DRAWING REVISIONS

GENERAL NOTE & DIMENSIONS

IN ABEYANCE

P02	23.09.25	Updated as per design development	AB	MM
P01	08.08.25	PRELIMINARY	AB	MM
REV	DATE	DESCRIPTION	BY	APP

Status: S3 REVIEW & COMMENT



Unit 8, Northumberland Business Park
Cramlington, Northumberland
NE23 7RY

Telephone: +44 (0)191 250 4330
Email: enquiries@merit.co.uk
Web: http://www.merit.co.uk

© WE OWN THE COPYRIGHT IN ALL WORK CREATED BY US OR FOR US. MANY OF OUR PRODUCTS ARE ALSO PATENT PROTECTED. REPLICATION OR REPRODUCTION OF SUCH WORK UNDER ANY CIRCUMSTANCES REQUIRES A WRITTEN LICENSE FROM US SETTING OUT THE TERMS UNDER WHICH SUCH REPLICATION AND/OR REPRODUCTION IS PERMITTED. OUR HEAVY INVESTMENT IN INNOVATION AND PRODUCT DEVELOPMENT NECESSARILY REQUIRES US TO RIGOROUSLY PROTECT OUR INVESTMENT AND INTELLECTUAL PROPERTY RIGHTS AND BREACHES OF OUR COPYRIGHT WILL BE PURSUED TO THE FULL EXTENT OF OUR RIGHTS. LICENSE REQUESTS SHOULD BE ADDRESSED TO: licences@merit.co.uk

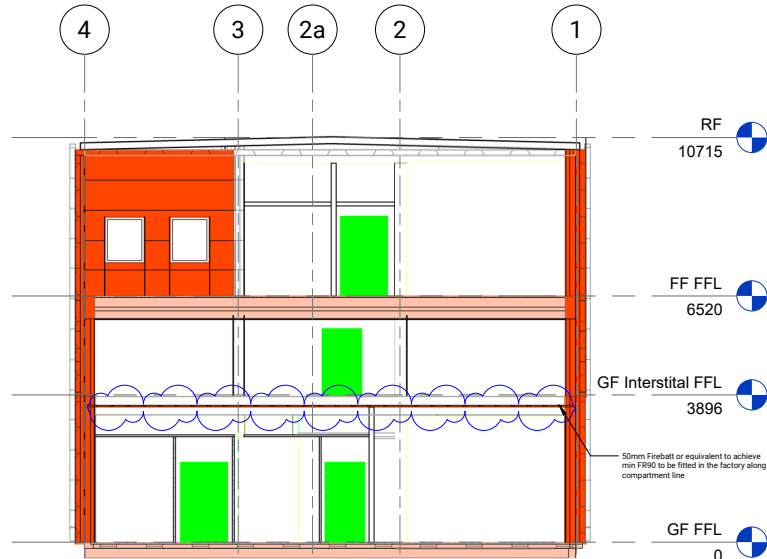
Client:

Drawing Title:
Envelope
Opening Layout
Details

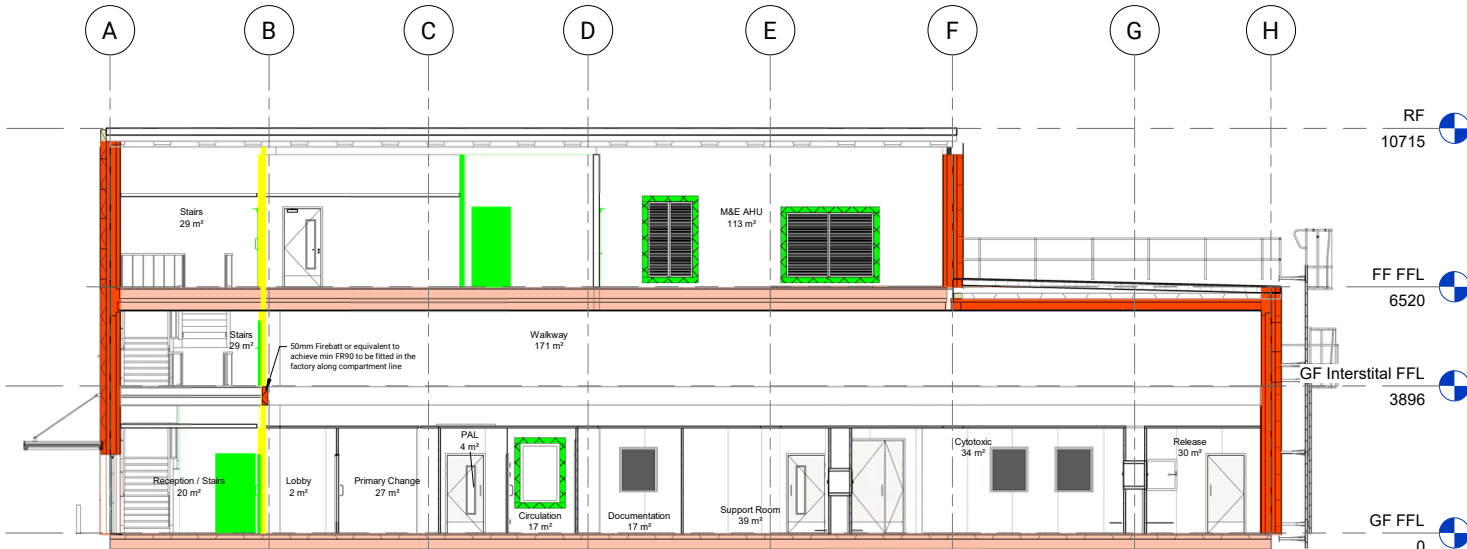
Project Name:	Size: A1	Scale: As indicated
Drawn By: AB	Drawn Date: 08.08.25	Checked By: MM
Approved By: TW	Approved Date: 08.08.25	Rev: P02
Drawing No: 10752-MRT-ZZ-ZZ-DR-A-3738		



1 Fire Strategy Section 1
1 : 100



3 Fire Strategy Section 3
1 : 100



2 Fire Strategy Section 2
1 : 100

Project type- Healthcare- Aseptic Facility Fire Strategy Sections

DRAWING ANNOTATIONS

DRAWING REVISIONS

GENERAL NOTE & DIMENSIONS

IN ABEYANCE

APPROVED DOCUMENT B FIRE LEGEND

ADB FIRE PROTECTION INFORMATION

The following is the relevant information this document must resolve as per Building Regulations Approved Document B.

- Escape routes - this should include exit capacity (i.e. the maximum allowable number of people for each storey and for the building).
- Fire resisting construction and location of fire-separating elements (including cavity barriers in walk-in spaces).
- Fire doorsets, fire doorsets fitted with a self-closing device and other doors relevant to the fire safety strategy, such as doors equipped with relevant hardware.
- Locations of fire detector heads (e.g. heat and smoke detectors), manual call points, fire alarm control and indicating equipment, fire alarm sounders, fire safety signage, emergency lighting, fire extinguishers, dry or wet fire mains and other firefighting equipment, and hydrants outside the building.
- Any sprinkler systems, including isolating valves and control equipment.
- Any smoke control systems, or ventilation systems with a smoke control function, including mode of operation and control systems.
- Any high risk areas (e.g. heating machinery).
- Any power supplies or power generating installations.
- The location of secure information boxes.

Fire strategy drawings shall be read in conjunction with the Fire Strategy Report and are to be reviewed and approved by the appointed Fire Engineer and the relevant Building Control Body.

ESCAPE ROUTES

- Final or Storey Exit
- Emergency Escape Route Single Direction
- Emergency Escape Route Multi Direction

FIRE RESISTING CONSTRUCTION

- Indicates 30 min Fire Resisting Construction
- Indicates 60 min Fire Resisting Construction
- Indicates 90 min Fire Resisting Construction
- Indicates 120 min Fire Resisting Construction
- Cavity Barrier to Provide 30 min Fire Resistance
- CB Indicates 30 min Fire Resisting Construction
- CB Indicates 60 min Fire Resisting Construction
- CB Indicates 90 min Fire Resisting Construction
- CB Indicates 120 min Fire Resisting Construction

FIRE DOORSETS

Intumescent fire/smoke seals and self-closing devices must comply with EN 13501 for fire classification, ensuring integrity (E), insulation (I), and smoke control (S) where required. To be indicated on door schedules.

- VP Vision panels to be provided to certain doors as indicated on plan.

- FD-SK Indicates Fire Resisting Door with self closing device.
- FD-LK Indicates Fire Resisting Door with no self closing device and "keep locked shut" notice.

- Fire Door FD30
- Fire Door FD60
- Fire Door FD90
- Fire Door FD120

Unless otherwise stated, all specified fire ratings are assumed to refer to both integrity and insulation performance.

FIRE FIGHTING EQUIPMENT

All fire fighting equipment to be provided and installed by client's representatives. All subject to their review in conjunction with the appointed Fire Officer.

- Portable fire extinguisher - Water type
- Portable fire extinguisher - Foam type
- Portable fire extinguisher - Carbon Dioxide type
- Portable fire extinguisher - Multi Purpose Dry

- Fire blanket
- Sand bucket

Fire safety equipment to be adequately and easily accessible. Extinguishers must be positioned in prominent locations for clear visibility and quick access. Compliance with BS 5306-8:2023 is required for the correct placement of fire extinguishers.

FIRE SAFETY SIGNAGE

Fire safety signs to comply with BS 5499 Graphical symbols and signs. Location of luminaires to be finalised by M&E drawing. Emergency exit signage to be either internally illuminated or illuminated by adjacent emergency fitting.

- Locations for fire alarm call points.
- Area to be lit by emergency lighting (not exact luminaire point).
- Area to have Fire alarm sounders. Final locations of alarm sounders to be finalised by specialist sub-contractor.
- Area to have visible warning beacons. Final locations to be finalised by specialist sub-contractor.
- "Fire Door - Keep Shut" signs (5mm min' high lettering)
- "Fire Door - Keep Locked Shut" signs (5mm min' high lettering)
- "Automatic Fire Door - Keep Clear" signs (5mm min' high lettering)

- S17 Door To Be Secured Open.(Released on fire alarm)
- S20 "Fire Escape - Keep Clear" signs (5mm min' high lettering)
- S22 "Fire Exit" sign and running man symbol
- S25 "Push bar to Open" sign - Panic Bar to Fire Exit doors.
- Fire Alarm Control Panel location. (Any type)

S22 SIGNS viewed Head-On - as illustrated on plan

All signage placement subject to review in on-site visual inspection by building control officer and fire officer prior to hand-over and therefore may be subject to change.

- Straight on/straight on & up from here
- Up & right from here
- Right from here
- Down & right from here
- Down from here
- Down & left from here
- Left from here

- Up & left from here
- Up & left from here
- Double sided exit signs
- Fire action procedure notice which deals with discovery of fire, hearing alarm, evacuation and roll call

Security and access control requirements to be confirmed by the client. Locations of fire safety signage and manual fire alarm call points are subject to client review and formal approval.

HIGH RISK AREAS

- Fire Hazardous Rooms High Risk
- Fire Hazardous Rooms Low Risk

POWER SUPPLIES & F. SECURE INFORMATION BOXES

Location of sprinklers to be finalised by M&E drawing.

SPRINKLER SYSTEMS

Location of sprinklers to be finalised by M&E drawing.

- Sprinkler Head Up
- Sprinkler Head Down

SMOKE CONTROL SYSTEMS

Location of sprinklers to be finalised by M&E drawing.

- SD Smoke Detector

DO NOT SCALE IF IN DOUBT ASK

NOTES:

ALL DIMENSIONS ARE IN MM UNLESS OTHERWISE STATED.

ANY ANOMALIES TO BE REPORTED TO DESIGN DEPARTMENT PRIOR TO FABRICATION.

ANY DEVIATIONS FROM DRAWING TO BE REPORTED TO DESIGN DEPARTMENT PRIOR TO INSTALLATION.

1.All copyright remains with Merit. Drawings are issued for this project only and must not be reused, copied, or adapted without written permission. Licence requests: licence@merit.co.uk.

2.Drawings must be read in conjunction with all relevant architectural, engineering, and specialist information to ensure full coordination.

3.Any discrepancies within these drawings or between them and other documents must be referred to Merit before work proceeds.

4.Do not scale from drawings. Use figured dimensions only. Dimensions marked "to be site checked" must be verified prior to construction.

5.Subcontractor surveys (e.g. for steelwork) override indicative dimensions and must ensure accurate fit and coordination.

6.The Principal Contractor is responsible for all temporary works and must appoint a competent Temporary Works Coordinator (TWC) in line with BS 5975.

7.Contractor-designed elements affecting Merit's scope must be submitted to the Engineer a minimum of 10 working days before fabrication. Merit's review does not transfer design responsibility.

8.Proprietary products shown are based on supplier data. Merit accepts no liability for their performance. Installation must follow manufacturer instructions.

9.All works must comply with the Construction (Design and Management) Regulations 2015. The Principal Contractor is responsible for site health, safety, and coordination.

10.Any significant residual design risks are highlighted in drawings or specifications and must be addressed in construction planning.

11. Only the latest revision of each drawing is to be used. Superseded versions must be removed from circulation.

P03	06.10.25	Updated fire strategy sections	AM	AB
P02	07.08.25	Revised as per fire engineer comments	AM	AB
P01	22.07.25	PRELIMINARY	AB	MM
REV	DATE	DESCRIPTION	BY	APP

Status:	S5	REVIEW & COMMENT
---------	----	------------------



Unit 8, Northumberland Business Park
Cramlington, Northumberland
NE23 7RY

Telephone: +44 (0)191 250 4330
Email: enquiries@merit.co.uk
Web: http://www.merit.co.uk

© WE OWN THE COPYRIGHT IN ALL WORK CREATED BY US OR FOR US. MANY OF OUR PRODUCTS ARE ALSO PATENT PROTECTED. REPLICATION OR REPRODUCTION OF SUCH WORK UNDER ANY CIRCUMSTANCES REQUIRES A WRITTEN LICENSE FROM US SETTING OUT THE TERMS UNDER WHICH SUCH REPLICATION AND/OR REPRODUCTION IS PERMITTED. OUR HEAVY INVESTMENT IN INNOVATION AND PRODUCT DEVELOPMENT NECESSARILY REQUIRES US TO RIGOROUSLY PROTECT OUR INVESTMENT AND INTELLECTUAL PROPERTY RIGHTS AND BREACHES OF OUR COPYRIGHT WILL BE PURSUED TO THE FULL EXTENT OF OUR RIGHTS. LICENCE REQUESTS SHOULD BE ADDRESSED TO: licence@merit.co.uk

Client:

Drawing Title:
Sections
Fire Strategy
Proposed Design

Project Name:		Size:	A1	Scale:	As indicated
Drawn By:	AB	Drawn Date:	21.07.25	Checked By:	MM
Approved By:	MM	Approved Date:	21.07.25	Rev:	
Drawing No:	10752-MRT-ZZ-ZZ-DR-A-3072				P03

tenders stage
selected works.

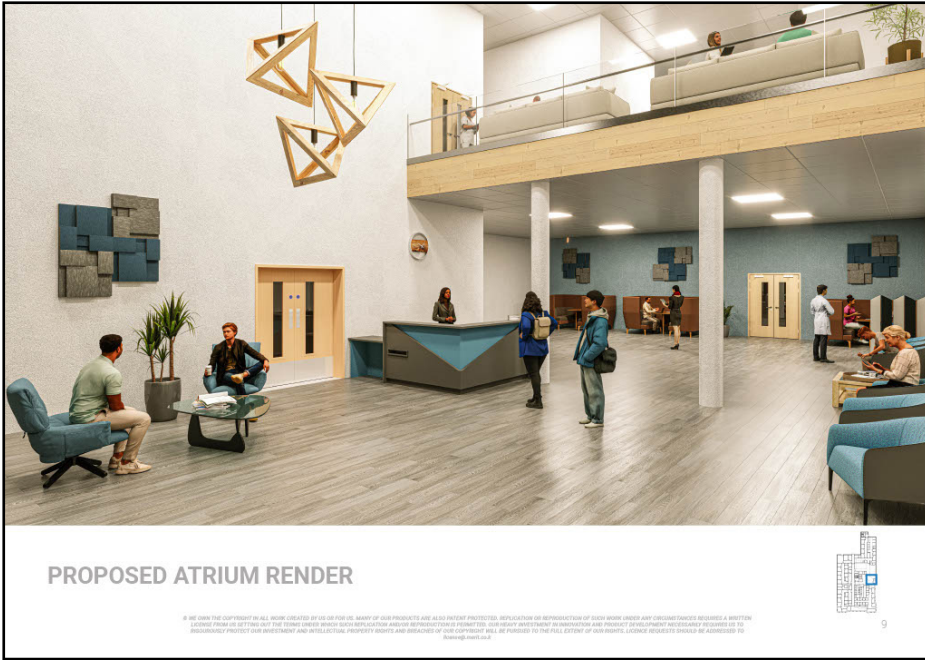
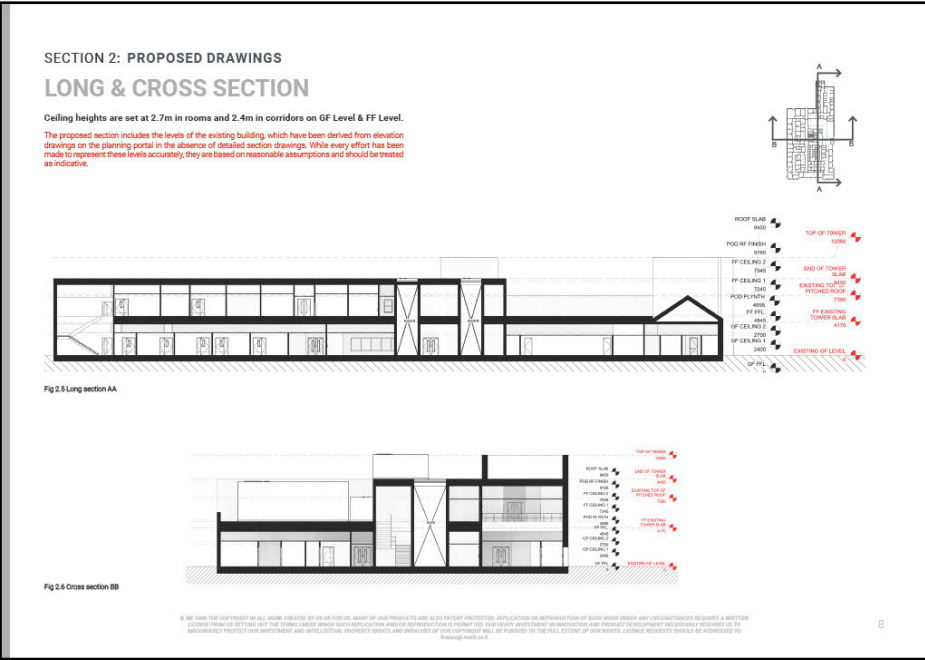
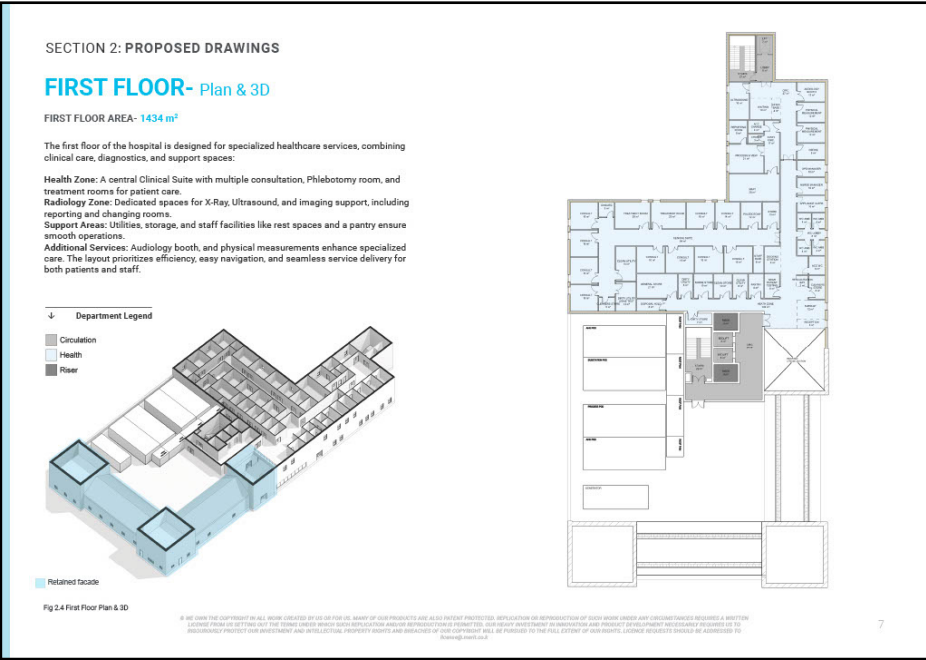
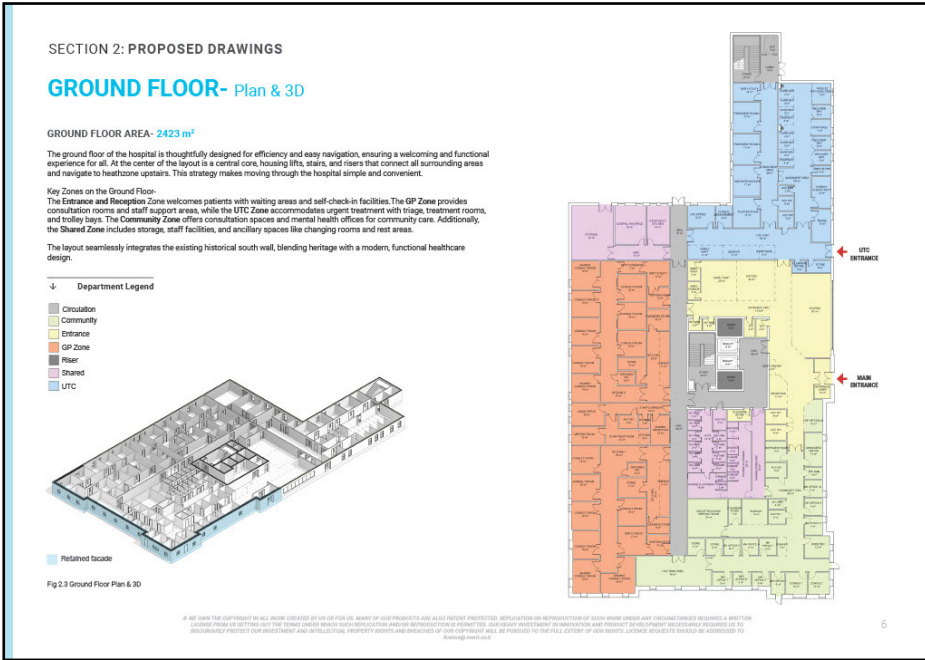
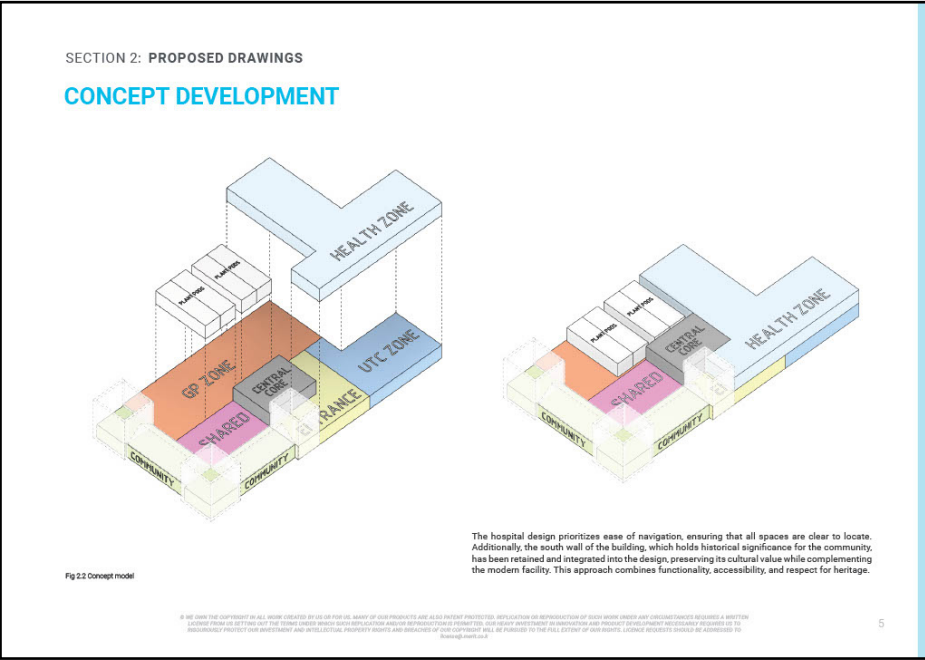
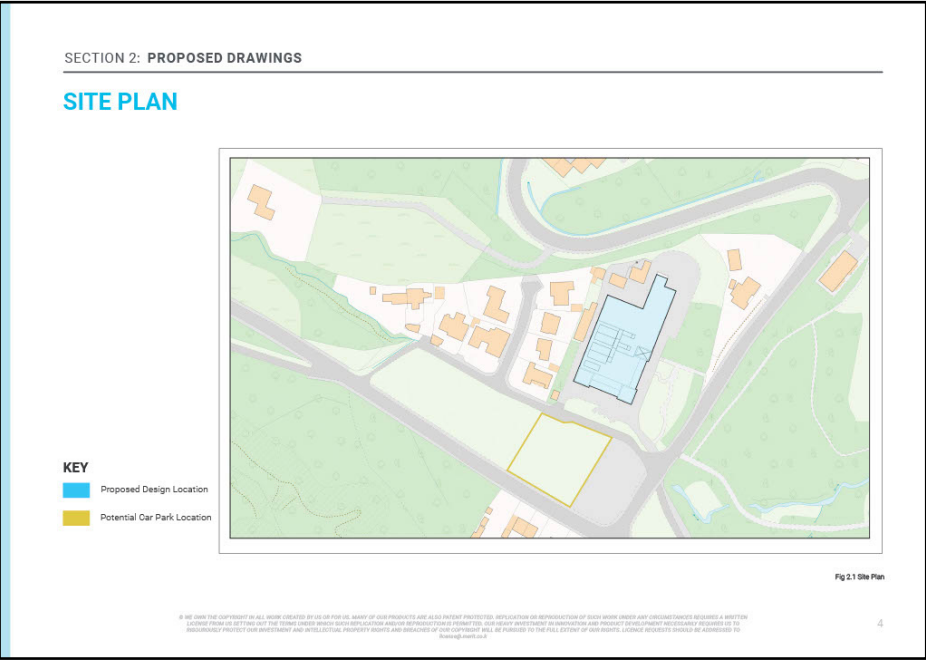
proposal document pages

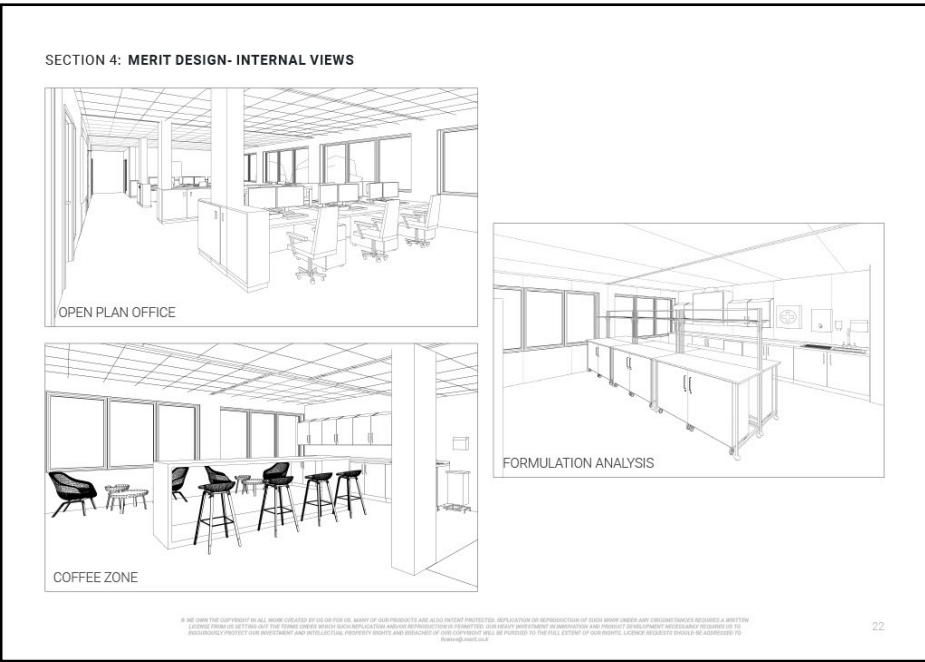
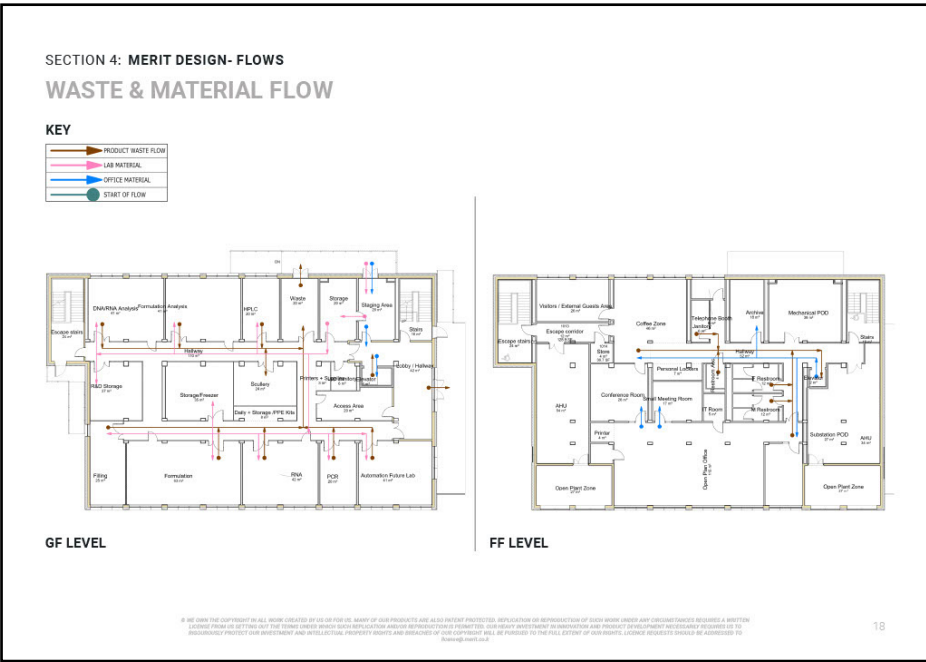
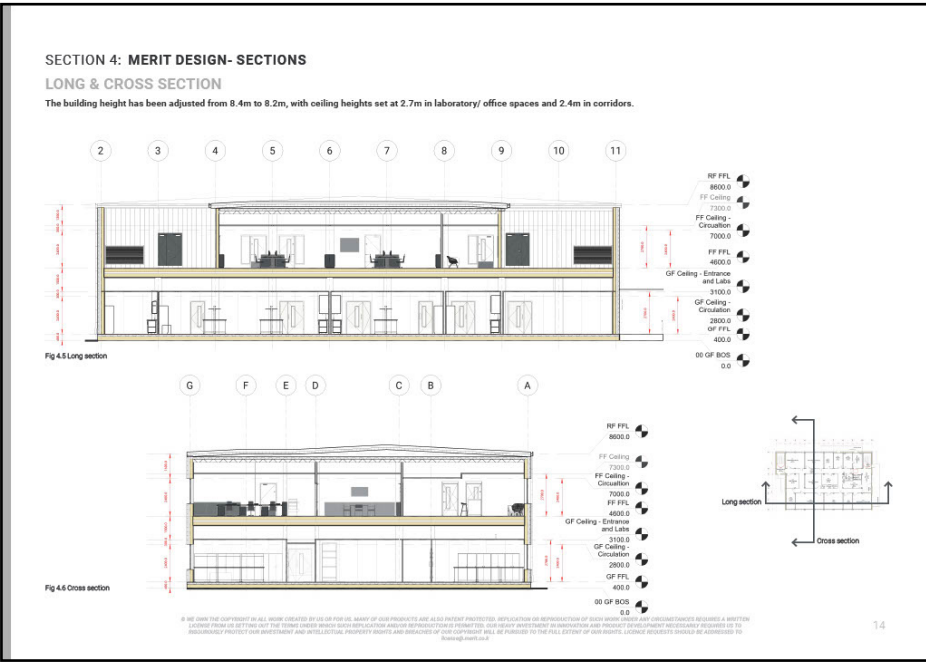
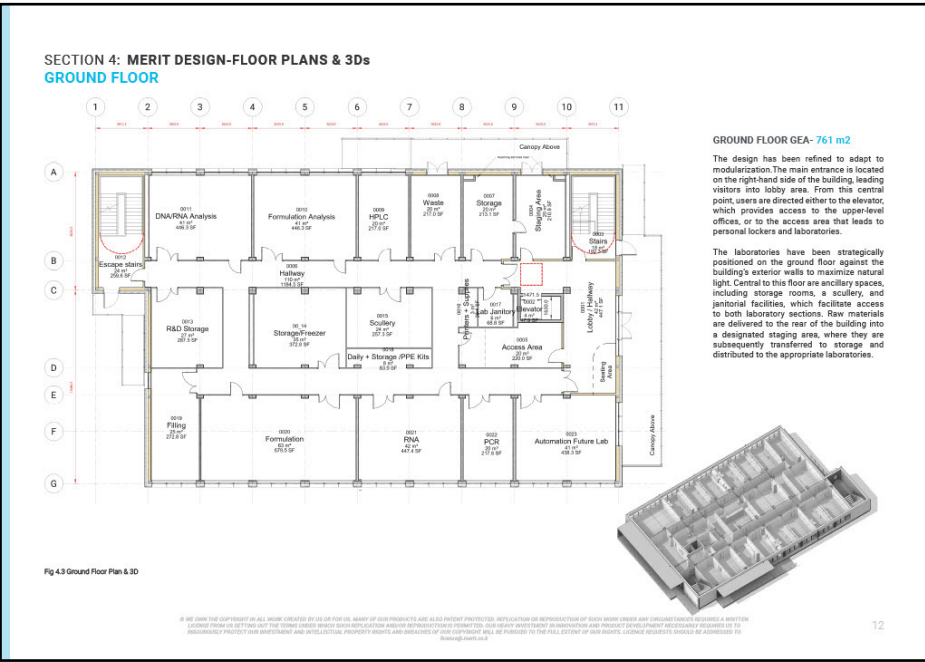
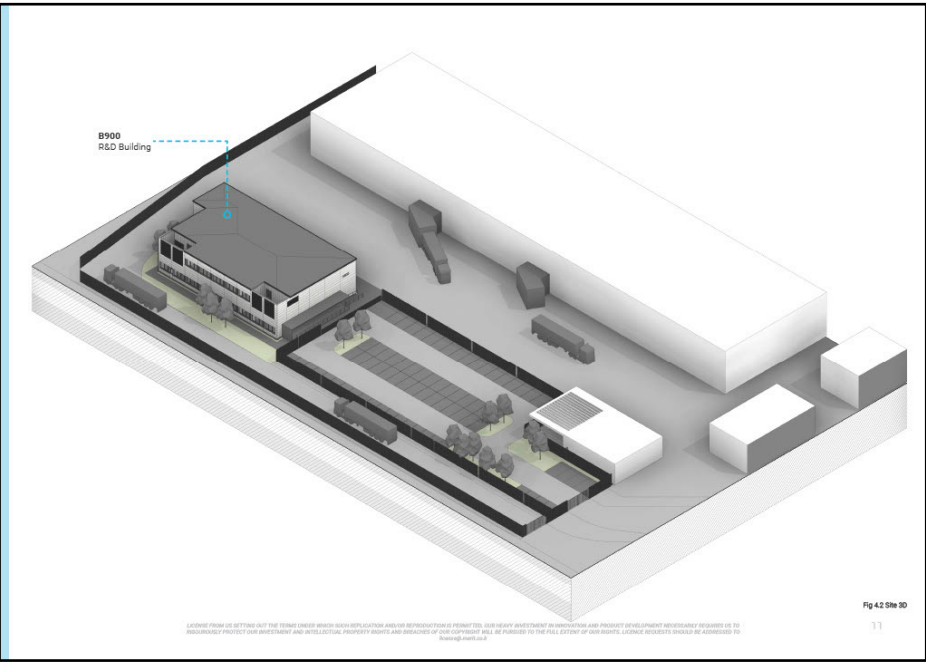


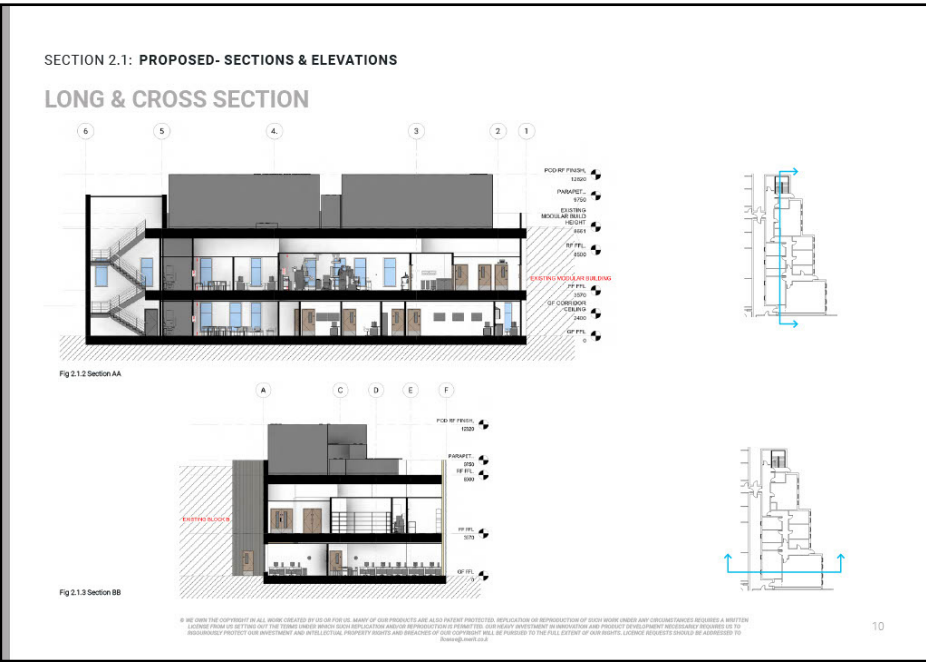
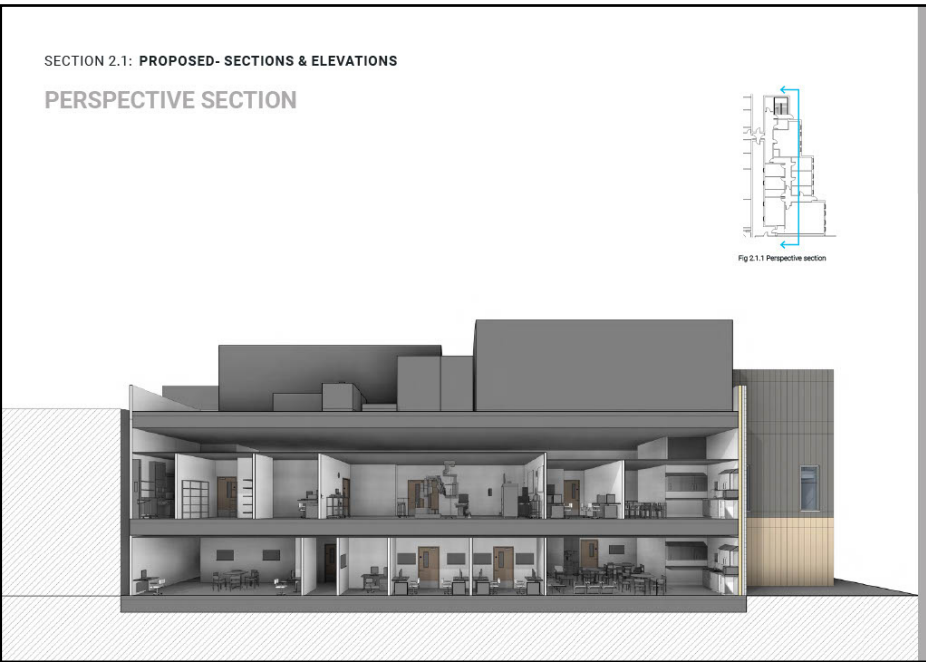
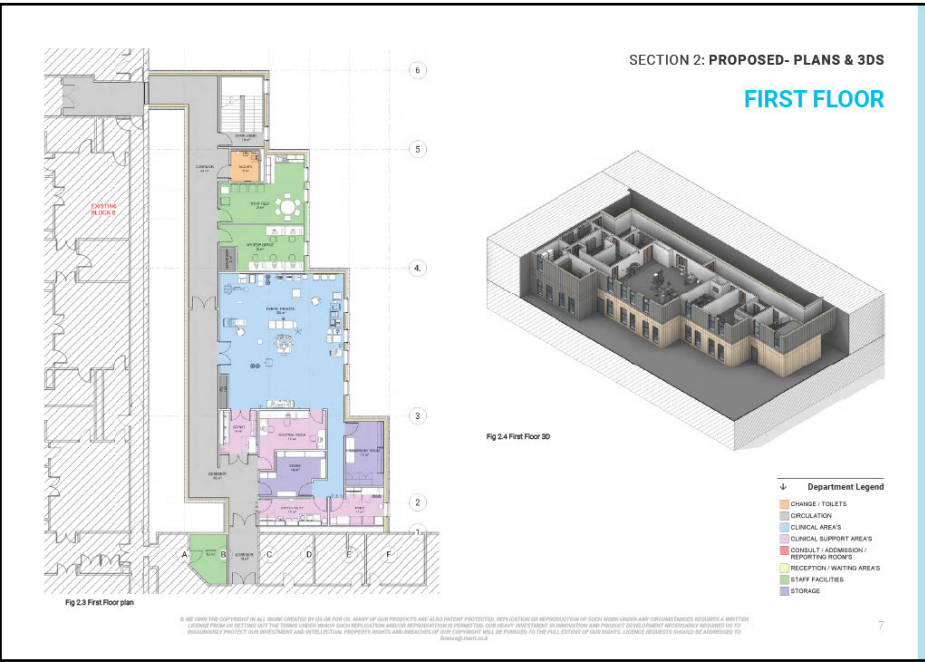
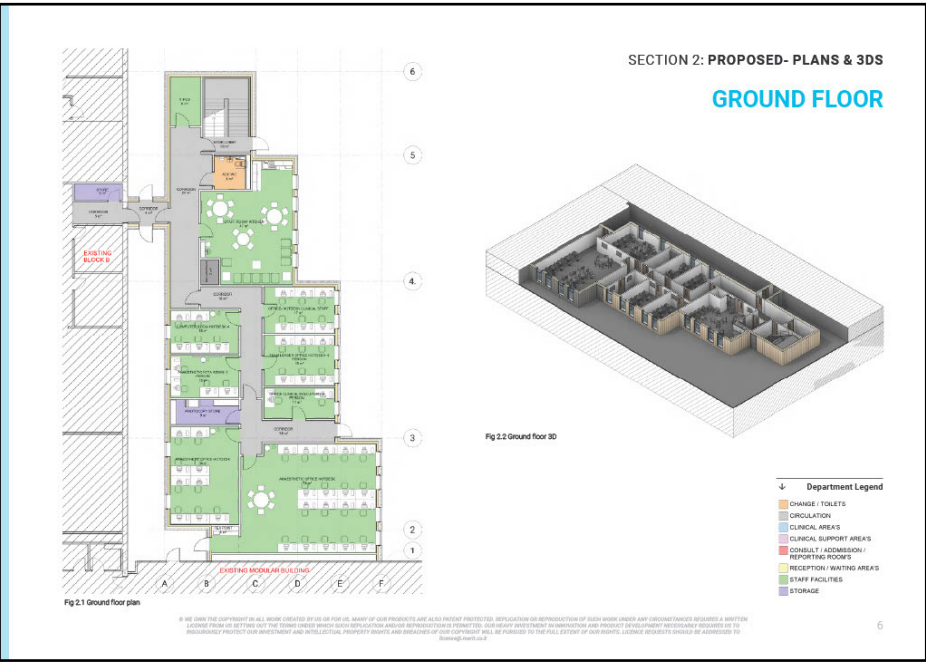
type.

Healthcare- Health and wellbeing centre plus Urgent care

Proposal document pages







Thankyou.
for your time

You can also view my design work @
www.anbdesigns.co.uk